

April 2016



Agenda

- Review metadata provided Workgroup members and discuss issues discovered
- Present metadata submission form and instructions for completion
- Planning for June/July meeting
 - Logistics and agenda

Initial Focus: Organizations and Monitoring Programs

- U.S. Fish and Wildlife Service, National Wildlife Refuge System
 - Nicole Rankin
- Florida's Coastal Habitat integrated Mapping and Monitoring (CHIMMP)
 - Kara Radabaugh
- Guana Tolomato Matanzas National Estuarine Research Reserve
 - Nikki Dix
- North Carolina Department of Environmental Quality, Division of Water Resources
 - Cyndi Karoly and Kristie Gianopulos

Reminder: Metadata Information

- Organization
- Monitoring Program
- Station Information and Parameters

USFWS: Southeast Region Inventory and Monitoring

Organization Name:	U.S. Fish and Wildlife Service, Southeast Region Inventory and Monitoring	Organization & Contact Information
Organization Acronym:	USFWS I&M	
Brief Description of Organization	The USFWS Southeast Region Inventory & Monitoring (I&M) Branch mission is to work collaboratively to assess the status of National Wildlife Refuge System (NWRS) lands, waters and biota and support achievement of conservation objectives at multiple spatial scales. We are specifically tasked to work closely with refuges, conservation partnerships such as Landscape Conservation Cooperatives, and other Service programs to address critical refuge information needs and evaluate effectiveness of conservation strategies on refuges.	
Type of Organization <i>(govt, education, non-profit, other):</i>	Federal Government	
Organization Web Page (URL):	http://www.fws.gov/southeast/imnetwork/	
Contact Names (if possible, list more than one person):	Nicole Rankin	
Email:	nicole_ranki@fws.gov	
Phone:	843-928-3264 ext 211	
Mailing Address:	5801 Highway 17 North	
City/Municipality:	Awendaw	
State:	SC	
Zip Code:	29429	

USFWS: Southeast Region Inventory and Monitoring

Program Name:	Coastal Wetland Elevation Monitoring	Monitoring Program
Acronym:	USFWS CWEM	
Brief Program Description:	Coastal wetland elevation monitoring is being conducted on 18 National Wildlife Refuges within the South Atlantic Landscape Conservation Cooperative in coordination with partners at NOAA, USGS, NPS, and other regions of the USFWS. This monitoring effort involves collecting surface elevation from rod surface elevation tables, accretion from marker horizons, porewater salinity, and vegetation community data at permanent monitoring sites deployed in selected priority wetland habitats to provide data to refuge managers on the status of and trends in wetland conditions within refuges.	
Scale of Program (regional, state, or local):	Regional	
Quality of Data	Standard protocols are used	
Funding Source:	USFWS	
Data Collected By (organization, contractor, etc):	USFWS Staff	
Program Web Page (URL):	http://www.fws.gov/southeast/IMnetwork/abiotic.html	

FWC/FWRI CHIMMP

Organization Name:	Florida Fish and Wildlife Conservation Commission, Fish and Wildlife Research Institute	Organization & Contact Information
Organization Acronym:	FWC, FWRI	
Brief Description of Organization	The Fish and Wildlife Research Institute's work includes assessment and restoration of ecosystems and studies of freshwater and marine fisheries, aquatic and terrestrial wildlife, imperiled species, and red tides. The institute develops the information science required to analyze and disseminate research products and engages in outreach activities to complement all programs.	
Type of Organization	State Government	
Organization Web Page (URL):	http://myfwc.com/research/about/	
Contact Names	Ryan Moyer, Kara Radabaugh	
Email:	ryan.moyer@myfwc.com, kara.radabaugh@myfwc.com	
Phone:	727-502-4986	
Mailing Address:	100 8th Ave SE	
City/Municipality:	St. Petersburg	
State:	FL	
Zip Code:	33701	

FWC/FWRI CHIMMP

Program Name:	Coastal Habitat Integrated Mapping and Monitoring Program	Monitoring Program
Acronym:	CHIMMP	
Brief Program Description:	CHIMMP's goals include aiding coordination of mapping and monitoring efforts in the state of Florida through workshops, pilot studies, collaborative reports in order to increase communication, minimize duplicate efforts and identify data gaps, needs, and priorities.	
Scale of Program (regional, state, or local):	state	
Quality of Data	This study is a pilot monitoring program to compare a variety of monitoring methods. No EPA QAPP.	
Funding Source:	Florida's State Wildlife Grants (SWG) Program	
Data Collected By:	CHIMMP	
Program Web Page (URL):	http://ocean.floridamarine.org/CHIMMP/	

Organization Name:	Guana Tolomato Matanzas National Estuarine Research Reserve	Organization & Contact Information
Organization Acronym:	GTMNERR	
Brief Description of Organization	The GTMNERR is one of 28 reserves in the U.S. protected for long-term monitoring, research, and education (see www.nerrs.noaa.gov). It is a partnership between the National Oceanic and Atmospheric Administration (NOAA) and Florida's Department of Environmental Protection (DEP). The GTMNERR participates in the System-Wide Monitoring Program (SWMP), which is designed to measure short-term variability and long-term change in estuaries around the nation.	
Type of Organization <i>(govt, education, non-profit, other):</i>	govt	
Organization Web Page (URL):	www.gtmnerr.org	
Contact Names (if possible, list more than one person):	Nikki Dix (Research Director), Pam Marcum (Biologist)	
Email:	nikki.dix@dep.state.fl.us	
Phone:	904-823-4500	
Mailing Address:	505 Guana River Rd	
City/Municipality:	Ponte Vedra Beach	
State:	FL	
Zip Code:	32082	

NERRS (GTM NERR)

Program Name:	National Estuarine Research Reserve System-Wide Monitoring Program	Monitoring Program
Acronym:	NERR SWMP	
Brief Program Description:	The vegetation community that is assessed varies by reserve. The protocol has been implemented for submerged aquatic vegetation such as eelgrass and algae, as well as for emergent vegetation such as salt marshes and mangroves. These data will be valuable for tracking changes in abundance of particular species of interest, or in species composition over time. For instance, the transects can be used to detect landward migration of vegetation communities in the face of projected sea level rise.	
Scale of Program (regional, state, or local):	national	
Quality of Data (<i>Does the program have an EPA-approved QAPP; were standard protocols used, etc.):</i>)	use standard NERR protocol for data collection; data are reviewed by a NERRS Biomonitoring Workgroup member and the Centralized Data Management Office	
Funding Source:	NOAA and DEP	
Data Collected By (<i>organization, contractor, etc):</i>)	Guana Tolomato Matanzas National Estuarine Research Reserve	
Program Web Page (URL):	http://nerrsdata.org	

NC Division of Water Resources

Organization Name:	North Carolina Division of Water Resources	Organization & Contact Information
Organization Acronym:	NC DWR	
Brief Description of Organization	state water resources division within the state environmental protection agency (NC Dept. of Environmental Quality)	
Type of Organization (<i>govt, education, non-profit, other</i>):	state government	
Organization Web Page (URL):	http://deq.nc.gov/about/divisions/water-resources	
Contact Names (if possible, list more than one person):	Cyndi Karoly, Kristie Gianopulos	
Email:	cyndi.karoly@ncdenr.gov , Kristie.Gianopulos@ncdenr.gov	
Phone:	919-743-8479, 919-743-8416	
Mailing Address:	Mail Service Center 1623	
City/Municipality:	Raleigh	
State:	NC	
Zip Code:	27699-1623	

NC Division of Water Resources - INTENS

Program Name:	Southeast Wetland Monitoring and Assessment Intensification Grant (NC)
Acronym:	INTENS
Brief Program Description:	As an augmentation to the EPA's first ever National Wetland Condition Assessment (NWCA) in 2011, several intensifications were funded to collect additional wetland information in certain areas, usually by state. These studies extended the national assessment by surveying more wetlands from the same population of wetlands selected for the national survey, using the same methodology. Under North Carolina's lead, an unprecedented Southeast regional intensification study was undertaken to sample 90 forested wetlands across four states: North Carolina, South Carolina, Georgia, and Alabama.
Scale of Program (regional, state, or local):	state (NC)
Quality of Data (<i>Does the program have an EPA-approved QAPP; were standard protocols used, etc.):</i>	The use of standardized EPA field and laboratory protocols allows data to be combined to produce a nationally consistent assessment. As part of the quality assurance procedures, each field crew was trained and evaluated on applying the NWCA protocols by wetland experts. NC Wetland Assessment Method and Ohio Rapid Assessment Method used for all sites unless otherwise indicated. Program had an EPA-approved QAPP.
Funding Source:	EPA
Data Collected By (<i>organization, contractor, etc):</i>	NC Division of Water Resources
Program Web Page (URL):	http://deq.nc.gov/about/divisions/water-resources

Monitoring Program

- Organization vs. Monitoring Program

Example:

- Organization: National Estuarine Research Reserve System
- Monitoring Programs:
 1. Ace Basin NERR Monitoring Program
 2. Guana Tolomato Matanzas NERR Monitoring Program
 3. North Carolina NERR Monitoring Program
 4. North Inlet Winyah Bay Monitoring Program
 5. Sapelo Island NERR Monitoring Program

Parameters

USFWS CWEM

- Surface elevation (RSET)
- Vertical Accretion (Marker Horizon)
- Porewater Salinity (Sipper Tubes)
- Vegetation (Carolina Vegetation Survey)

GTM NERR

- species cover
- canopy height
- porewater temperature
- porewater salinity

CHIMMP

- Vegetation % cover
- plant height
- soil pH
- porewater salinity
- adjacent surface water DO, salinity, pH, temperature

NCDWR

- species cover
- canopy height
- porewater temperature
- porewater salinity

Assignment

- All workgroup member submit their information
- Due Date: Friday, May 13
- Review submission form

June Meeting

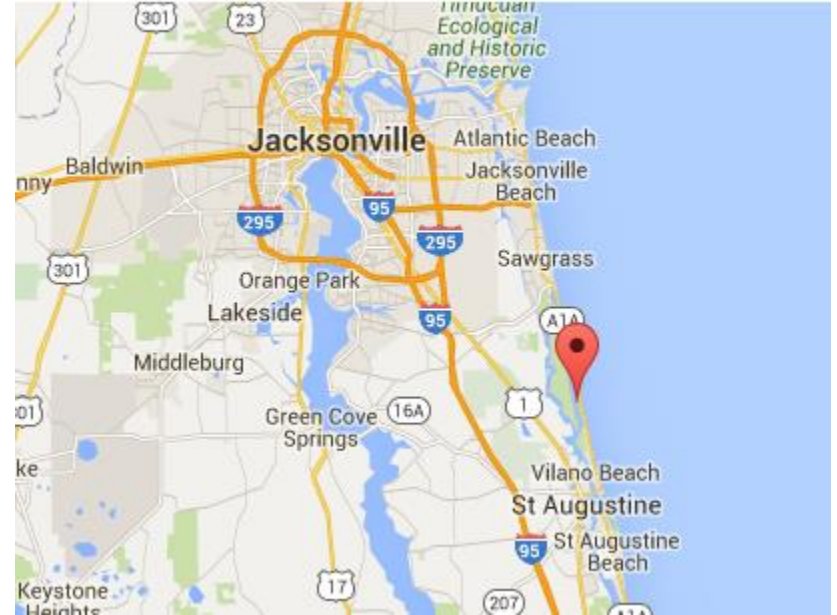
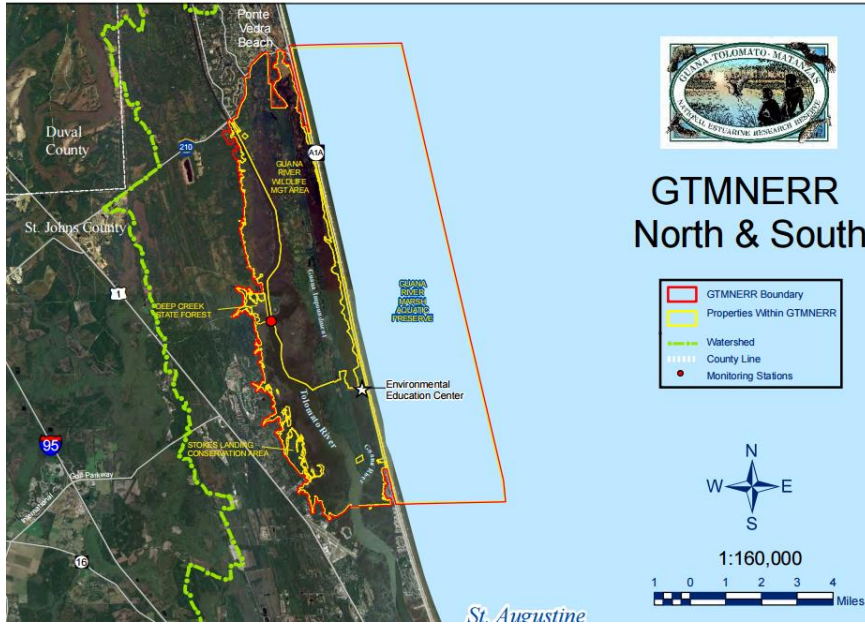
Purpose:

- Provide comments on the “Beta” version of the database
- Review of state wetland monitoring efforts
- Identify potential collaborations
- Identify data gaps or missing monitoring efforts

Logistics:

- Dates: June 27-28 (M-T); July 7-8 (Th-F); July 11-12 (M-T)
- Location: Guana Tolomato Matanzas National Estuarine Research Reserve near Jacksonville, FL

Guana Tolomato Matanzas National Estuarine Research Reserve



YOU ARE AN IMPORTANT PART OF THIS LANDSCAPE
Learn about the many ways you can explore

Meeting Information

- 2-day meeting
 - Start 1pm on Day 1
 - End by 4 pm on Day 2
 - Tour morning of Day 2
- Nearest Airport: Jacksonville
- Hotel Location: TBD (~ 15 minutes from meeting location)
- Potential car-pooling/ride share (contact Kim if interested)

Contact Kristine Cherry for travel support information:

- 843-953-0740
- Kristine.Cherry@GSAAlliance.org

Next Steps

- April
 - Select date for June/July meeting and distribute agenda information
 - Distribute request for metadata information
- May
 - Organizations and monitoring programs submit data (Due: May 13)
 - Develop database based on initial information
 - Refine database during May teleconference (Thursday, May 19)
 - Review targeted monitoring programs/organizations
- June/July (in person meeting)
 - Present the draft database