

Habitat Creation on Land Managed by NJ Division of Fish and Wildlife



- Partnered with NJDFW & TNC
- NJIWW Dredging & Placement was 100% funded through O&M Emergency Supplemental
- Approx 6,000 cy of sand



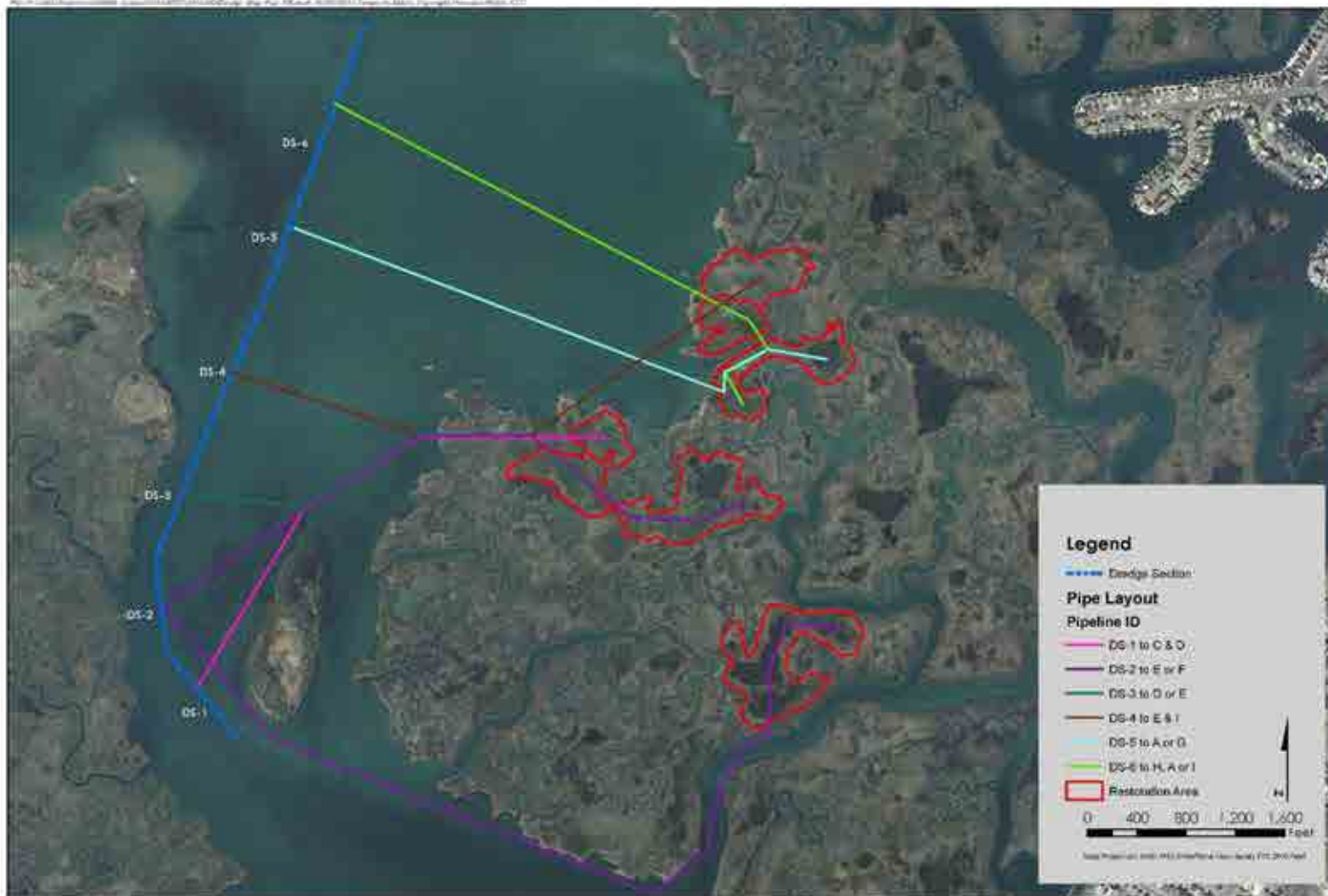
Ring Island Habitat Creation and Thin-layer Placement



- Constructed August 2014
- Small thin layer placement demo with sand
- Created shore bird habitat



NJIWW Dredging & Avalon Placement Thin Layer Placement Project Constructed Nov 2015 to Feb 2016



THIN LAYER DREDGE
PIPE LAYOUT CONFIGURATION
Avalon, New Jersey

PRINCETON DREDGE, LLC
1149 OLD YORK ROAD
P.O. BOX 175
AVALON, NJ 08001
NEW JERSEY, USA



Avalon NJ Pilot Project using 5,000 cy NJIWW material (fine) with placement to restore degraded marsh and demo thin layer placement on NJDFW land



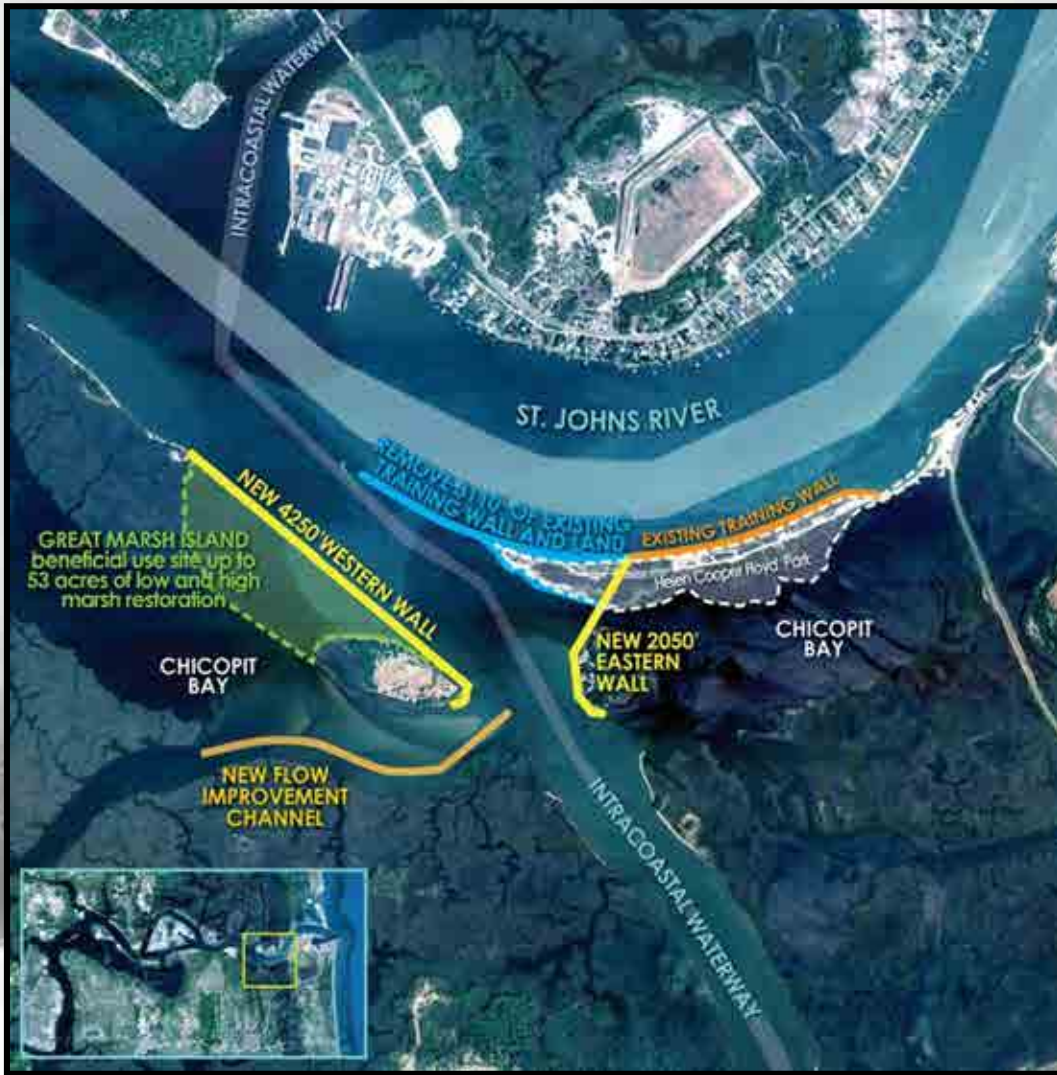
Construction in Jan 2015 was 100% federal; Partners provided expertise, containment measures and oversight on the marsh during placement & will monitor performance




Positive Feedback so far on Pilot with lessons learned on construction and initial monitoring underway. Anticipate larger project in Fall 2015 with approx 50,000 cy




MILE POINT TRAINING WALL RELOCATION/RECONFIGURATION




 Existing Training Wall
(~3000 feet)

 Training Wall Removal
(western ~3110 feet)

 New Training Wall
(western leg ~4250 feet;
relocated eastern leg ~2050 feet)

 Great Marsh Island Restoration
(beneficial use of dredged material)

 Flow Improvement Channel
(~80 feet wide, ~6 feet deep,
~3623 feet length)



BUILDING STRONG®





BUILDING STRONG®

US ARMY CORPS OF ENGINEERS | Jacksonville District

Contacts

Jason Engle, Chief, Water Resources Engineering Branch

Jason.a.engle@usace.army.mil

RSM Regional Center of Expertise

Jackie Keiser, RSM CX Director

Jacqueline.J.Keiser@usace.army.mil

NJ Pilot Projects

Monica Chasten, Philadelphia District Dredging Manager

Monica.A.Chasten@usace.army.mil

Jacksonville Harbor Mile Point

Jason Harrah, PM

Jason.S.Harrah@usace.army.mil

