

Governors' South Atlantic Alliance



North Carolina • South Carolina • Georgia • Florida

Highlights of the Proposed South Atlantic Regional Planning Body Charter

Kristine Cherry, GSAA Coordinator

Bruce Cwalina, Navy Region Southeast

EPT Meeting
Charleston, SC
April 7, 2015

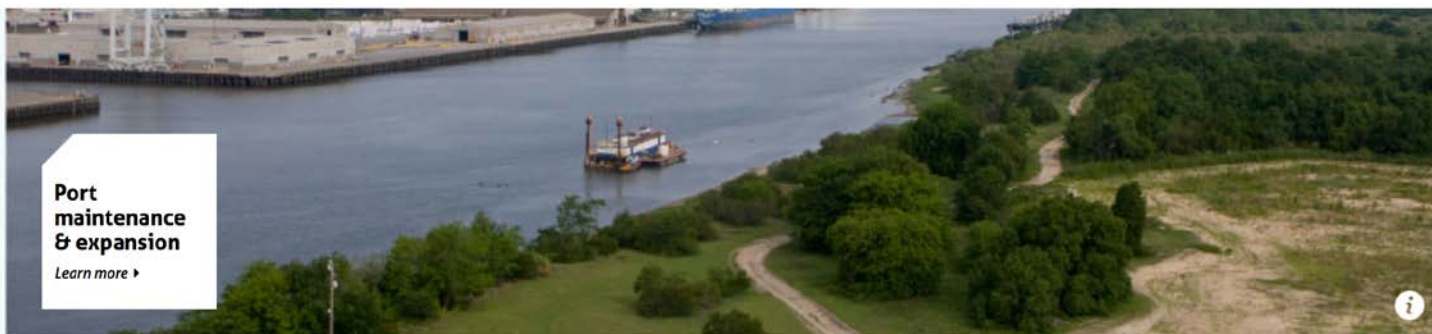
Marine Planning in the Action Plan

- **Action HE3A**: Initiate a joint federal-state agency marine spatial plan that identifies the location of key coastal and marine resources and activities for incorporation into multi-use management decisions.
 - (e.g., commercial and recreational fishing areas, shipping lanes, military areas, energy development areas, sand resource areas used for beach nourishment, etc.)
- **Every priority issue area has actions related to data and mapping needs.**

Marine Planning Activities

Current Marine Planning Efforts

- The states have already undertaken some marine planning activities through individual state efforts and GSAA activities.
- State efforts are at various stages of development, but all include
 - Data and information gathering on ocean and coastal uses
 - Providing open access to spatial data
 - Some level of stakeholder engagement
- GSAA marine planning activities focused on gathering data and information via gsaaportal.org



Port maintenance & expansion

[Learn more](#) ▶

LEARN

Understanding the range of regional ocean planning needs ▶

EXPLORE

Access our most current data ▶

VISUALIZE

Launch our map and tools ▶

LEARN

Beach Renourishment
Port Maintenance and Expansion
Habitat Conservation
Hazard Vulnerability Assessment

EXPLORE

VISUALIZE



Beach Renourishment

The southeastern United States is known for its broad sandy beaches and visitors travel from across the globe to enjoy our coast. In the face of erosion, coastal communities are renourishing their beaches to help maintain tourism, provide local enjoyment and protect investment. It is more than just sediment data that goes into completing a beach renourishment project. [LEARN MORE ▶](#)



Port Maintenance and Expansion

The four Governors' South Atlantic Alliance states each have busy ports that help feed the coastal economy. These ports require regular dredging to maintain their shipping lanes. A variety of information goes into maintenance and deepening decisions.

[LEARN MORE ▶](#)



LEARN

EXPLORE

[Data Catalog](#)

VISUALIZE

[Jurisdictions and Boundaries / 24](#) ▶

[Marine Habitat / 20](#) ▶

[Marine Species / 54](#) ▶

[Oceanographic Features / 4](#) ▶

[Ocean Uses / 22](#) ▶

[Upland Uses / 2](#) ▶

The **Data Catalog** gathers available data and recruits new data about ocean resources and human use information such as fishing grounds, recreational areas, shipping lanes, habitat areas, and energy sites. Data falls into one of seven themes listed below. You can explore the data available under each theme, or search for the data using the form below.





DATA ACTIVE (3) IDENTIFY QUERY

Search X

Boundaries

Coastal and Marine Habitat

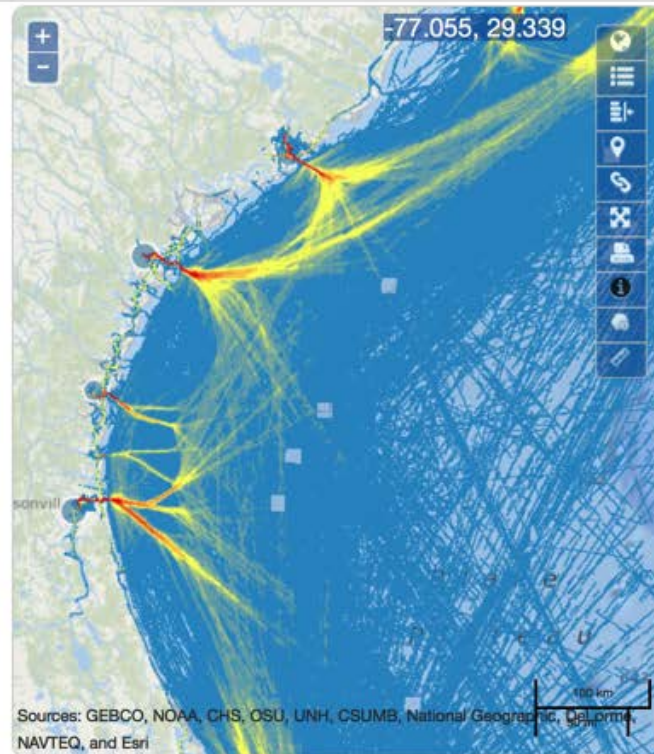
Coastal and Marine Models

Designations and Restrictions

Marine Industry

- Commercial Fisheries ▾
- Principal Ports
- Shipping and Navigation ▾
- Commercial Vessel Density (2009-2010)
- Navigable waterways
- Shipping Fairways, Lanes and Zones
- Wrecks and Obstructions

Marine Species



LEGENDS (3) X

- Mandatory Ship Reporting for the Protection of Northern Right Whales
- Particularly Sensitive Sea Area
- Precautionary Area
- Recommended Routes
- Separation Zone
- Shipping Safety Fairway
- Traffic Lane

Commercial Vessel Density (2009-2010)

- 1 - 25
- 26 - 50
- 51 - 75
- 76 - 100
- 101 - 250
- 251 - 500
- 501 - 750
- 751 - 1500
- More than 1500

Current Status

- Usage?
- SECOORA to maintain to 2016 unless additional resources become available
- HE team requested decision by EPT to maintain and grow the portal, or take appropriate steps to shut it down

Marine Planning Workshop (Dec 2013)

GSAA Interests and Benefits

- **Filling data gaps** that can support ocean and coastal management decisions
- Providing **necessary data and information** for federal consistency
- Learning more about potential **impacts of and opportunities for offshore energy**
- Identification of **offshore sand resources**
- Addressing waterfront and waterways **navigation issues and port expansion** opportunities
- **Habitat conservation**
- Improved **understanding and communication** about ocean and coastal uses

Primary challenge – ability of the partners to commit resources to a new effort

Marine Planning Workshop (Dec 2013)

Actions Discussed:

- Each State develops
 - “Shining stars” or small examples of MSP
 - Communicates to region their MSP plans so we can add value and partners

Marine Planning Workshop (Dec 2013)

Actions Discussed:

- As a region
 - Develop 5 broad statements to show Governors and to gain support
 - Develop/share methodologies for collecting data
 - Develop/share outreach methodology among Sea Grant programs
 - Develop a document that makes a value proposition for marine planning
 - Document the importance of the coastal ocean for our region for context, include environment, economy, cultural and social resources
 - Audience – for ourselves
 - Outcome – talking points for states and region
 - Identify data priorities (GSAA, SECOORA role? *Note – RIMS project began with survey of regional data priorities*)
 - Start with top 5 priorities?
 - Talk to state GIS staff
 - Next step – share with stakeholders
 - Do scenario tests with key stakeholders (ie – sand, offshore wind)

Marine Planning Workshop (Dec 2013)

Next Steps Identified

- Coordination of existing mapping efforts with the GSAA Coast and Ocean Portal (Navy data, SALCC and TNC efforts, state atlas projects).
- Gathering information on existing marine planning examples to establish a value proposition for marine planning.
- Review RIMS project survey of regional data priorities and share with stakeholders.
- Articulate the importance of the environmental, economic, and cultural resources in the South Atlantic as a foundation for encouraging more investment in understanding these resources.

Resilience Regional Driver (2014)

GSAA Regional Driver

Resilient South Atlantic **coastal environments, communities, and economies** can **anticipate, prepare for, and adapt to coastal hazards** common to all states and resulting threats to growing coastal populations and economic stability.

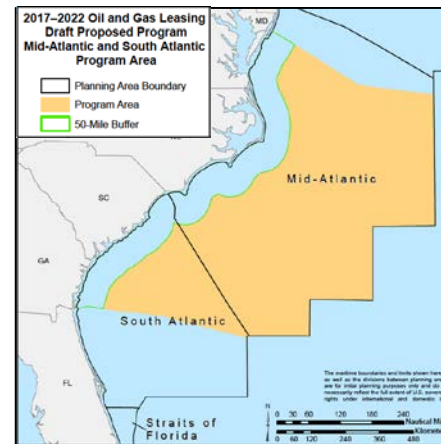


Annual Strategic Issues

Selected for 2015



Business Post-Disaster
Recovery Planning



Improved Data and Planning
for Offshore Energy Siting

Regional Planning Body Progress

Oct 2013 – National Ocean Council sent letters to states, tribes, SAFMC to identify Points of Contact

May 2014 – FL letter sent

Sep 2014 – All POCs named

Sep 2014 – Tentative plan for RPB discussions agreed at GSAA Annual Meeting

- » Conference Call or Meeting of POCs
- » Draft Charter by end of 2014
- » Initial Public Stakeholder Meeting

Dec 2014 – Draft RPB Charter provided by Navy

Apr 2015 – Review draft charter, discuss next steps