

GSAA Coast and Ocean Portal

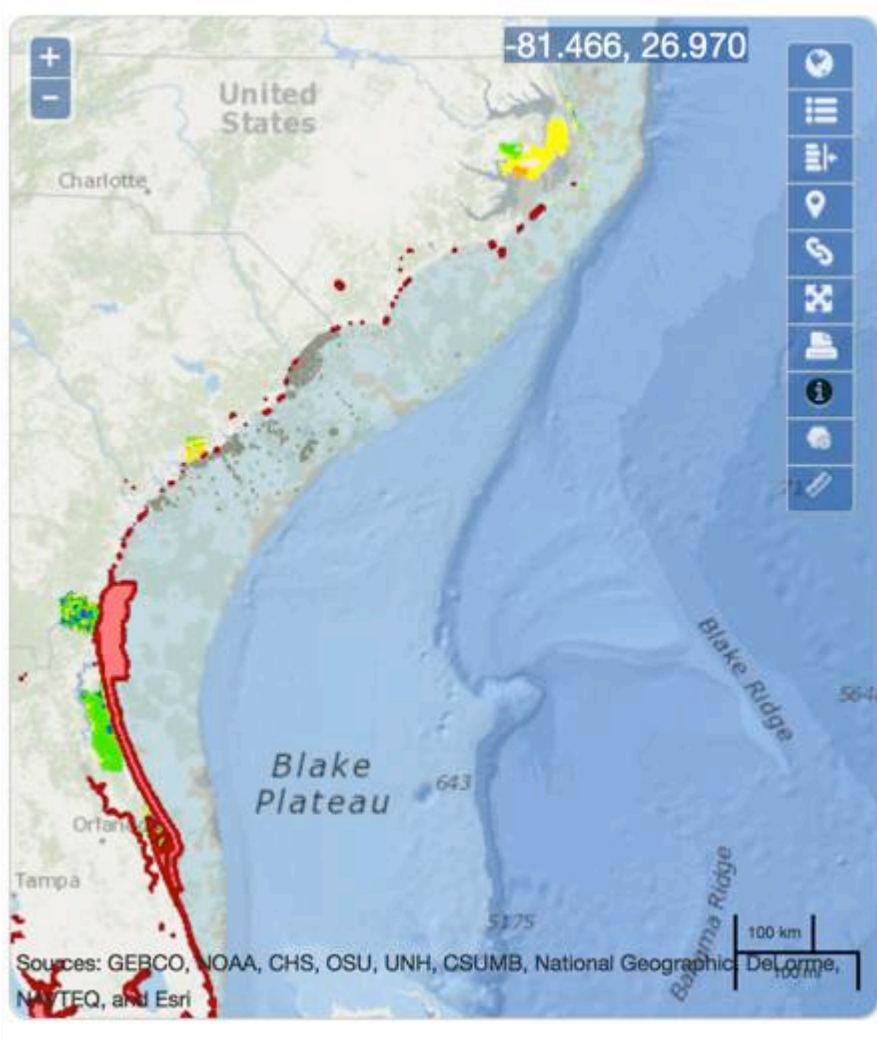
Debra Hernandez and Jen Dorton, SECOORA
(Southeast Coastal Ocean Observing Regional Association)

Mary Conley, TNC

Dwayne Porter & Dan Ramage, USC

Tony Giarusso, GA Tech, Corrie Curtice, Duke

Presentation Outline



1. SECOORA Introduction
2. GSAA Portal Design Considerations
3. GSAA Portal Highlights and Demonstration
4. Next Steps

Integrated Ocean Observing System (IOOS)



President Barack Obama signed the Integrated Coastal and Ocean Observation System Act of 2009 (ICOOS Act) into law.

IOOS Regional Component

A network of eleven regional coast ocean observing systems that meet national and regional needs for local ocean observations, data management, and modeling

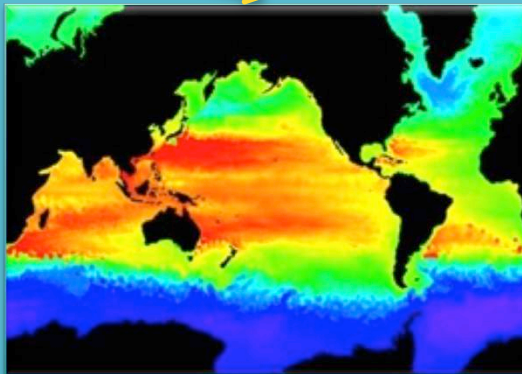




wind, wave,
current
climatologies

wind, wave,
current,
nowcasts &
forecasts

surface
current maps



SECOORA 101

Mission:

Support decision-makers by collecting and synthesizing coast & ocean data

- Regional
- Membership-based nonprofit
- Support, facilitate, and leverage observing activities in SE



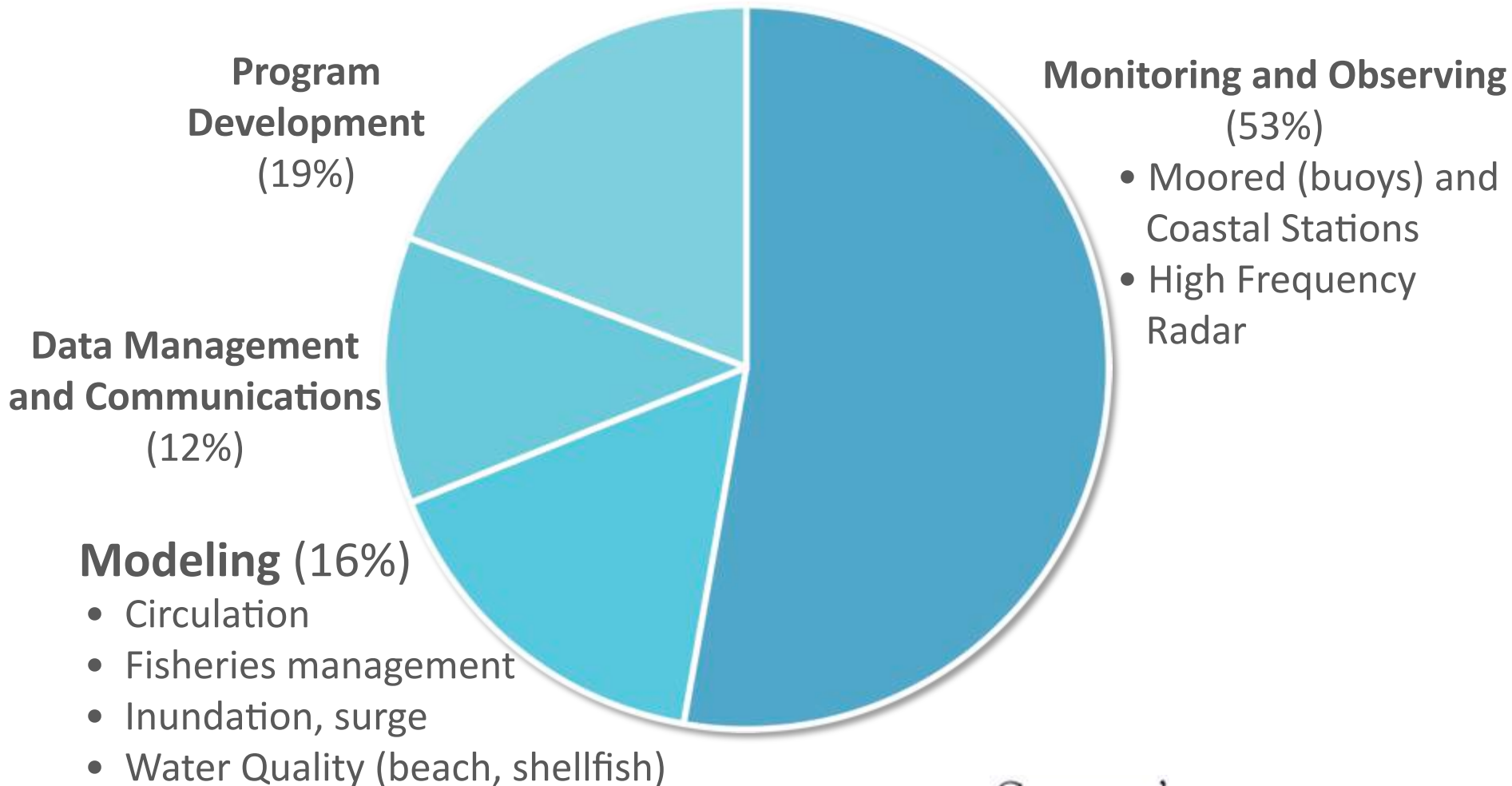
SECOORA Members



Governors'
South Atlantic
Alliance

North Carolina • South Carolina • Georgia • Florida

SECOORA Subcomponents



SECOORA 2013 Highlights



9 MILLION

Web page views of
SECOORA data and
information on
<http://ndbc.noaa.gov/>

125,288 PEOPLE VISITED
OUR WEBSITE

 **27% FROM 2012**

1.7 MILLION

Non-federal coastal
ocean observations
aggregated and shared



62 OUTREACH
EVENTS



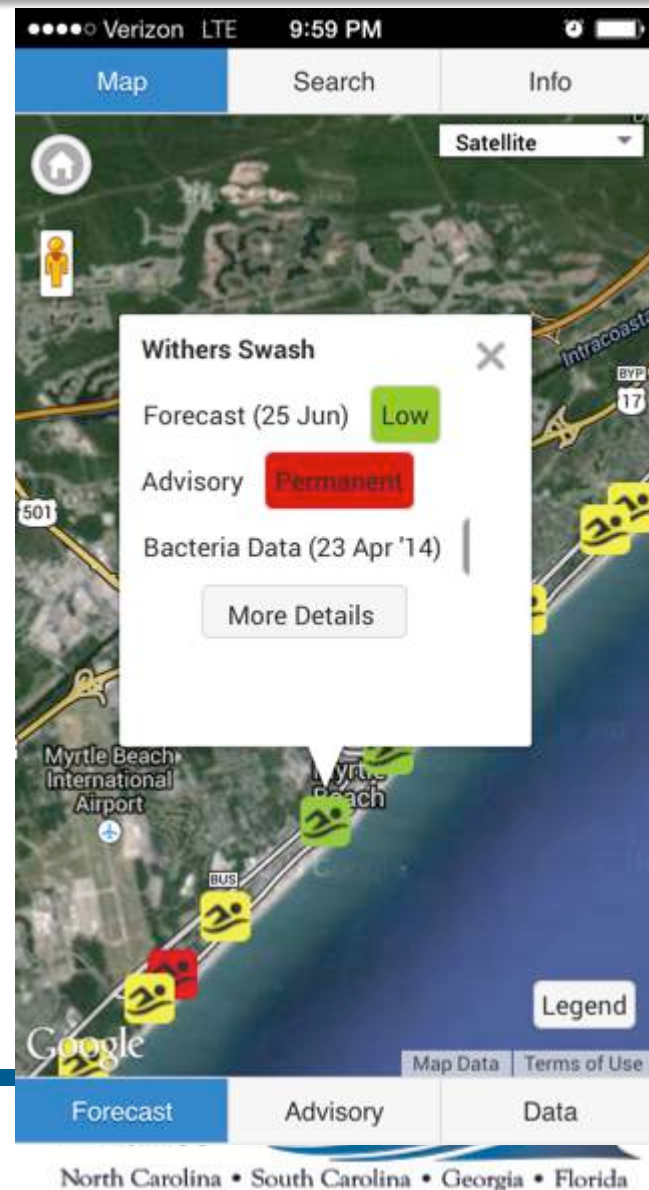
 **58% FROM 2012**

Product: How's the Beach

Beach Water Quality App

“ This model has reduced the sampling burden for our Regional staff; but the major benefit has been the Department's quicker response time for posting beach advisories and subsequent enhancement of our agency's primary mission of protecting the public health. ”

David E. Wilson, PE Chief
Bureau of Water, SCDHEC



GSAA Coast and Ocean Portal Funded Partners & Collaborators



POINT 97 | An Ecotrust Company





LEARN

Understanding the range of regional ocean planning needs ▶

EXPLORE

Access our most current data ▶

VISUALIZE

Launch our map and tools ▶

Support GSAA

Issue Area Technical Team Actions (from GSAA Implementation Plan)



- **HE1A** – Coordinate state programs **to map known distributions of key estuarine, marine habitats**, and land use ...



- **HE1C** - Maintain/enhance interstate/regional efforts to implement **ecosystem based planning** and management ...

- **HE3A** - Initiate a joint federal-state agency marine spatial plan that **identifies the location of key coastal and marine resources and activities** for multi-use management decisions ...



- **WW1A** - Integrate regional long-range planning for **both commercial and federal ports** increased communication between member states ...

- Step 5: Identify underutilized brownfields for port expansion opportunities.

- **WW1C** - Support community-based mapping work **to identify contemporary recreational and commercial working waterfront sites** ...

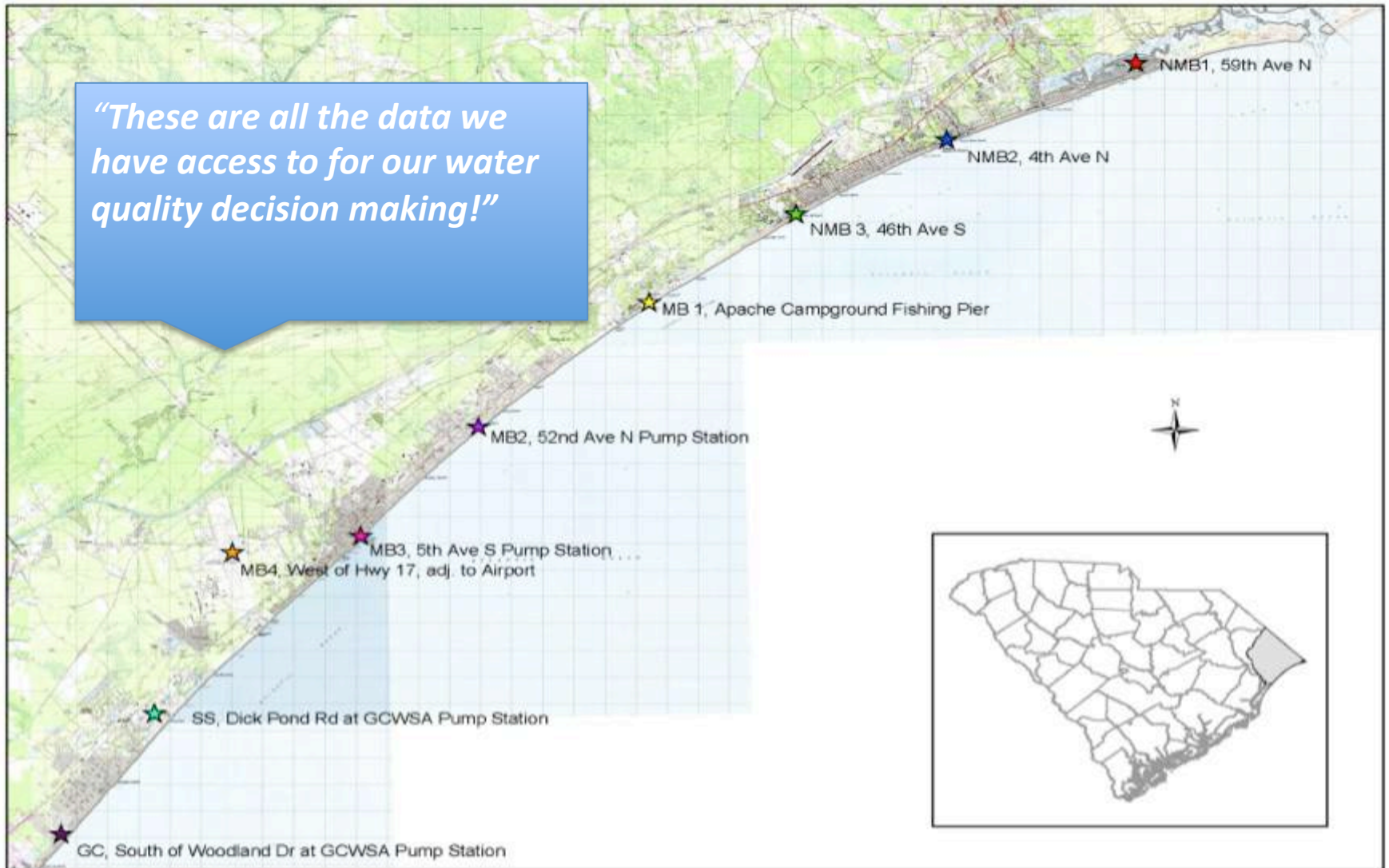


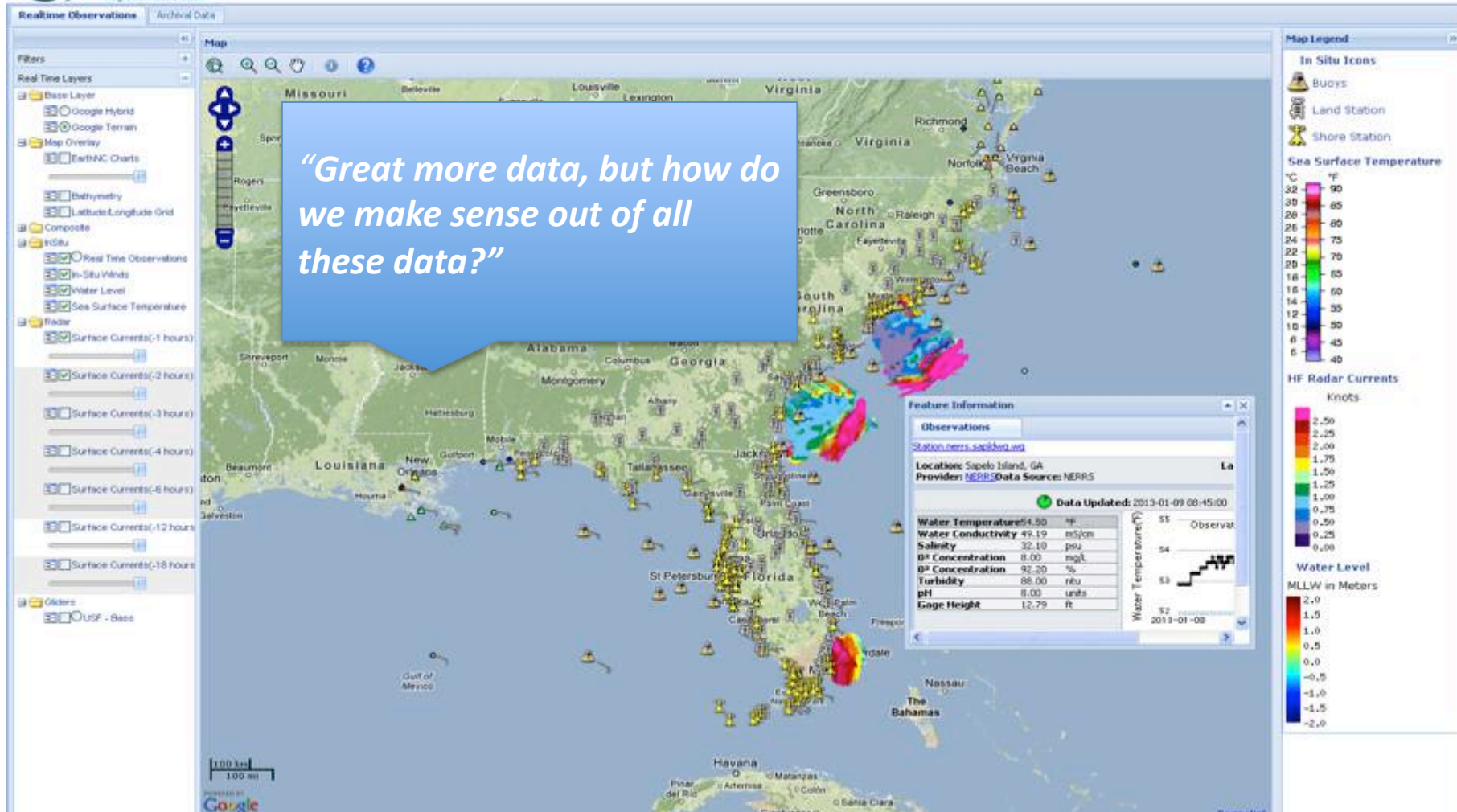
- **WW2C** - **Inventory public access infrastructure** and support facilities within the four states ...

Perceived /real bottlenecks in decision-support systems:

- ▶ Insufficient density of appropriate data observations, **and/or**
- ▶ Access to and integrated use of relevant distributed, heterogeneous data, **and**
- ▶ Insufficient decision-support tool development / availability

"These are all the data we have access to for our water quality decision making!"





gsaaportal.org



ABOUT THE PORTAL ▾

VISIT GSAA [↗](#)

FEEDBACK



Portal is a Tapas restaurant.

**Port
maintenance
& expansion**

[Learn more ▶](#)

Data catalog is
the menu of
ingredients

Visualize is the chef and kitchen
who can conjure up lots of
different tapas depending on
the tastes of the customers.

LEARN

Understanding the range of
regional ocean planning needs ▶

EXPLORE

Access our most current data ▶

VISUALIZE

Launch our map and tools ▶

GSAA Portal Goals & Objectives

- **Year 1 (2012): Design GSAA Portal**
 - Assess user needs
 - Design and develop initial Portal
 - Prioritize and create regional ***ocean*** datalayers
 - Evaluate decision-support tools (DSTs)
- **Year 2 (2013): Operate and market Portal**
 - Operate and populate Portal
 - Mine data / fill gaps
 - User feedback, outreach and training
- **Year 3 (2014): Expand and maintain Portal**
 - Add ***estuarine*** data layers
 - Add Military use theme
 - Portal maintenance
 - Outreach / marketing

Design Considerations

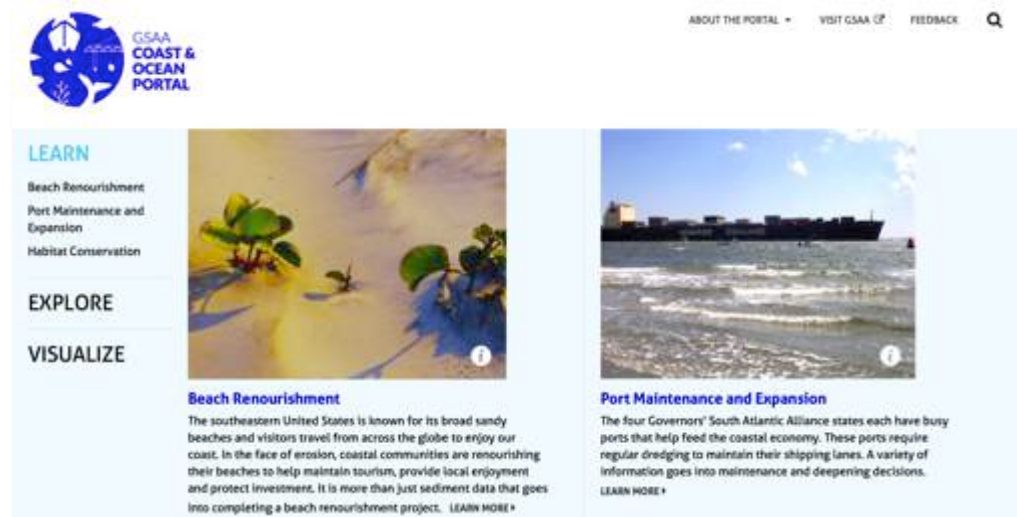
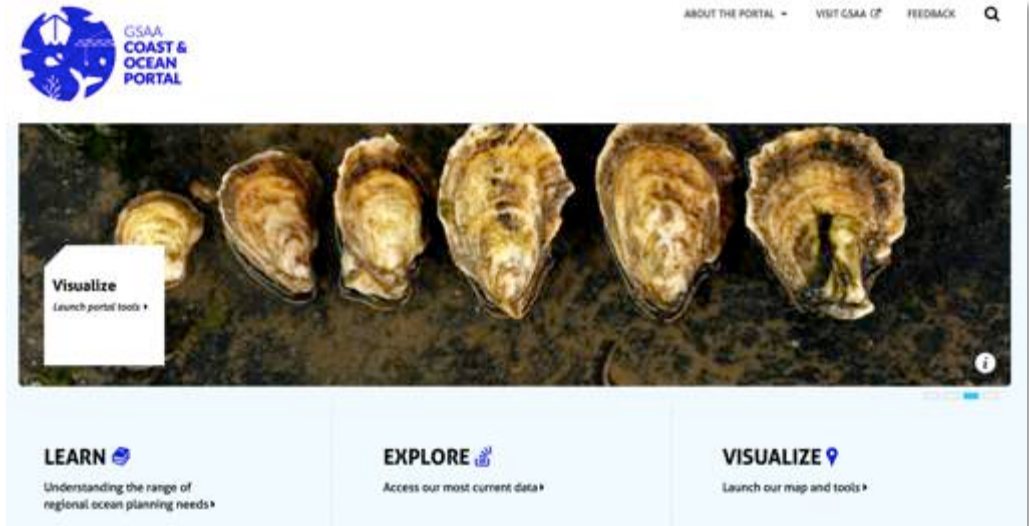
- Clean, minimalist look
- Uniquely SE
- Icons that incorporate priority GSAA issues

 **Clean Coastal and Ocean Waters**

 **Disaster-Resilient Communities**

 **Healthy Ecosystems**

 **Working Waterfronts**



QUESTIONS?



LEARN

Understanding the range of regional ocean planning needs ▶

EXPLORE

Access our most current data ▶

VISUALIZE

Launch our map and tools ▶

QUESTIONS?

Other Activities / Next Steps

- SALCC
 - Slide to be provided by Mary Conley
- Military Use Theme

Upcoming Regional Spatial Data

TNC South Atlantic Assessment (December 2014)

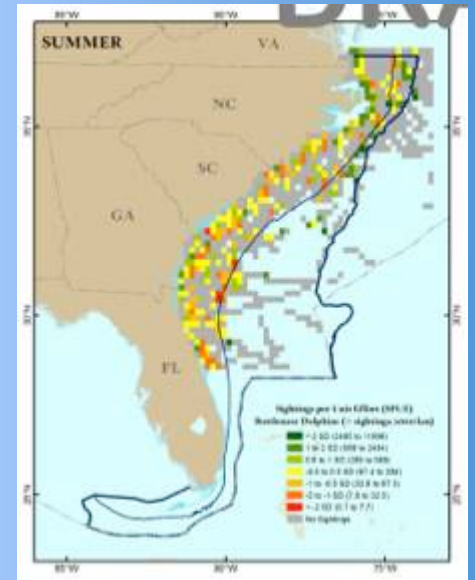
Seafloor



Coastal



Migratory



Feedback ...

- Do you have data to share?
- Are there datalayers you want added?
- Is there functionality that would be valuable?

