



# Setting a Course for a Sustainable Landscape



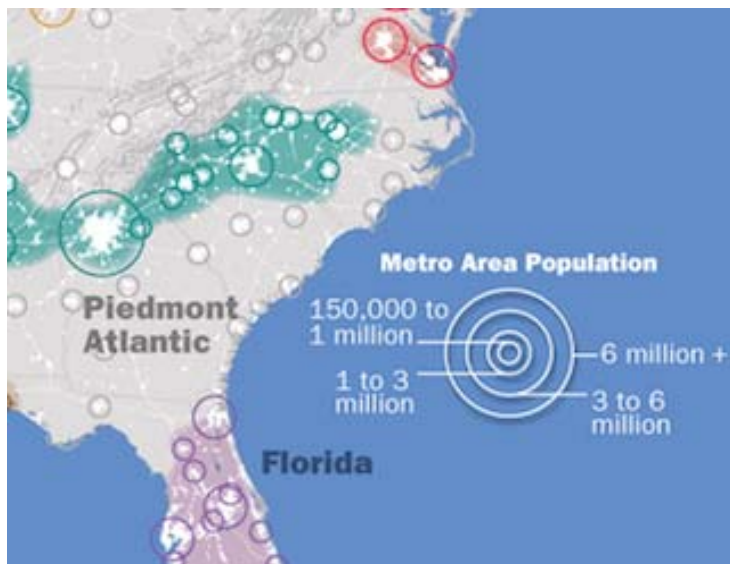
SOUTH ATLANTIC  
LANDSCAPE CONSERVATION COOPERATIVE



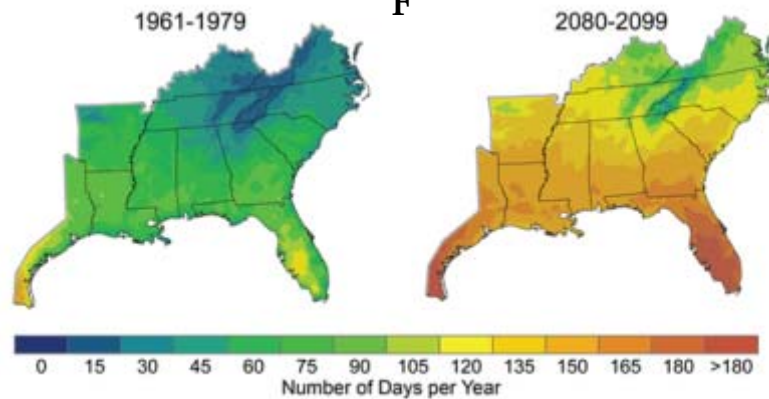
## What is the South Atlantic Landscape Conservation Cooperative (SALCC)?

A partnership of federal, state, and private organizations dedicated to conserving a landscape capable of sustaining the nation's natural and cultural resources for current and future generations.

# Why does what we're doing matter?



Days per year with peak temperature over 90°  
F





What are we for...

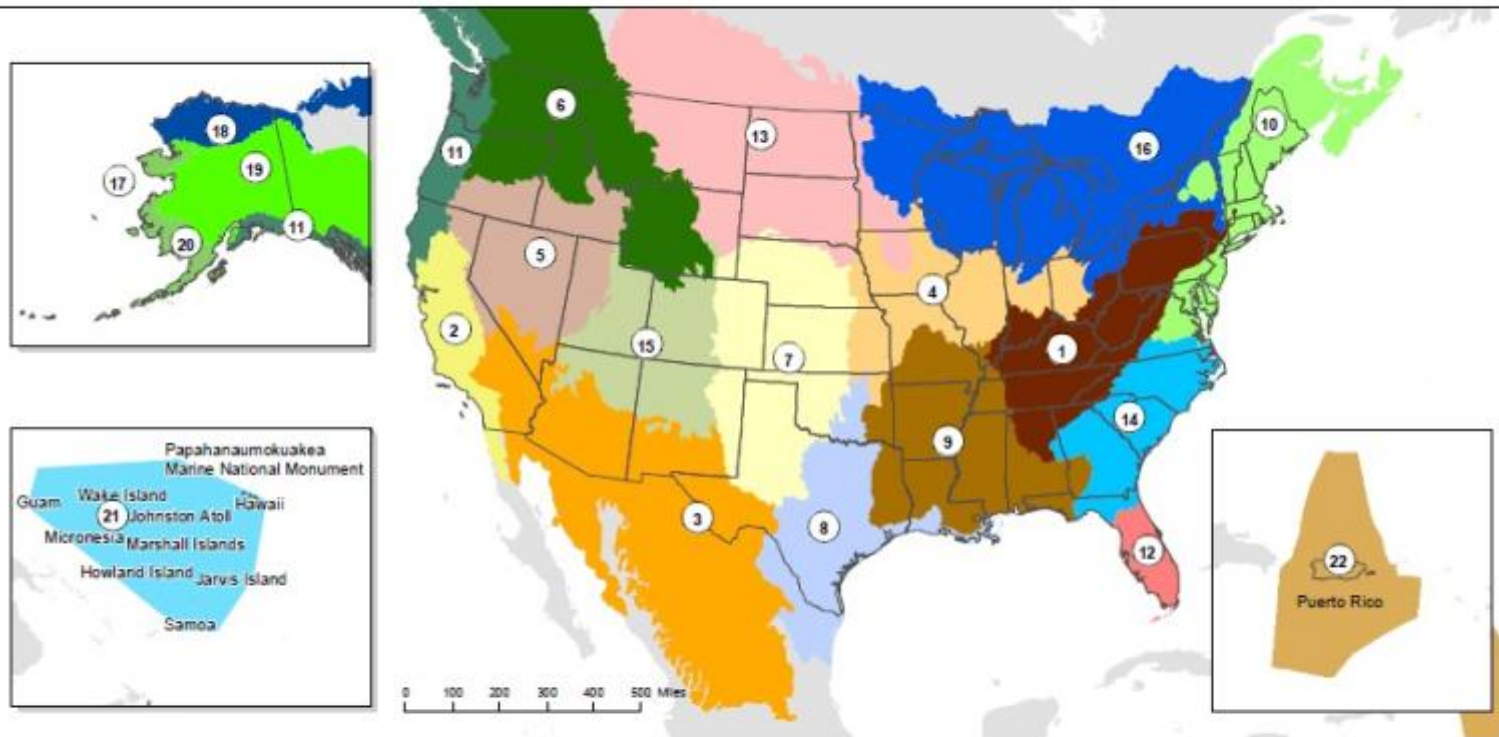


# SALCC Basics

- Over 89 million acres (terrestrial, freshwater, marine)
- 92% private land
- 120% increase in urban area by 2050



# Landscape Conservation Cooperatives

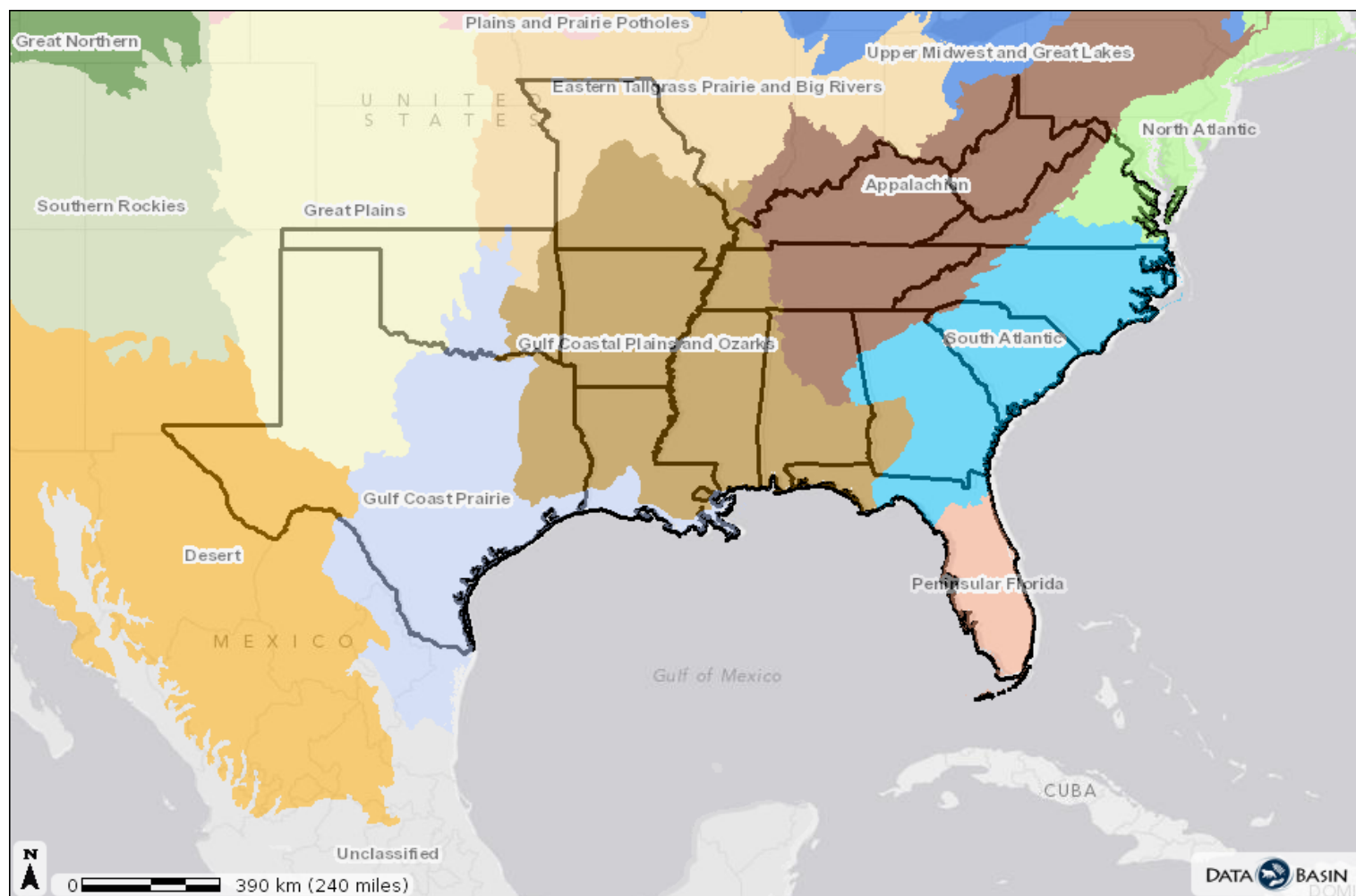


## Landscape Conservation Cooperatives

- |   |                                   |                                     |                                  |
|---|-----------------------------------|-------------------------------------|----------------------------------|
| 1. Appalachian                              | 7. Great Plains                   | 13. Plains and Prairie Potholes     | 19. Northwestern Interior Forest |
| 2. California                               | 8. Gulf Coast Prairie             | 14. South Atlantic                  | 20. Western Alaska               |
| 3. Desert                                   | 9. Gulf Coastal Plains and Ozarks | 15. Southern Rockies                | 21. Pacific Islands              |
| 4. Eastern Tallgrass Prairie and Big Rivers | 10. North Atlantic                | 16. Upper Midwest and Great Lakes   | 22. Caribbean                    |
| 5. Great Basin                              | 11. North Pacific                 | 17. Aleutian and Bering Sea Islands | Unclassified                     |
| 6. Great Northern                           | 12. Peninsular Florida            | 18. Arctic                          |                                  |

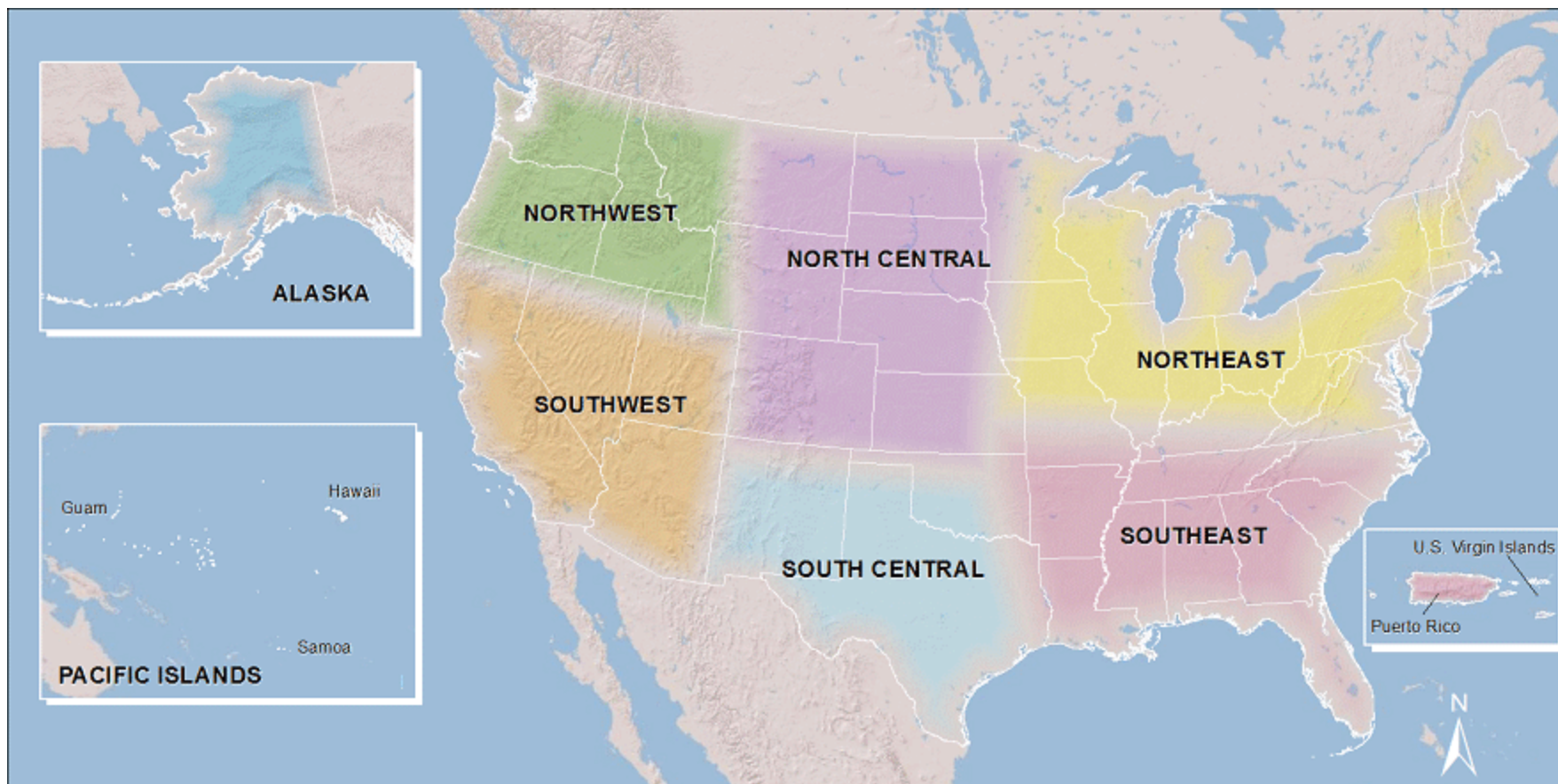
Albers Equal Area Conic NAD83  
Produced by FWS, IRTM, Denver, CO  
Map Date: 12/14/2011

# Southeast Conservation Adaptation Strategy



Created by: Ken McDermond, 2013

# Climate Science Center



# What does the SALCC do?

**Mission:** Create a shared blueprint for landscape conservation actions that sustain natural and cultural resources



A decorative blue wavy graphic at the top of the slide.

# What is the Blueprint?

An interactive, living map that describes the places and actions needed to meet the SALCC's conservation objectives in the face of future change.

# How does your Cooperative operate?

You

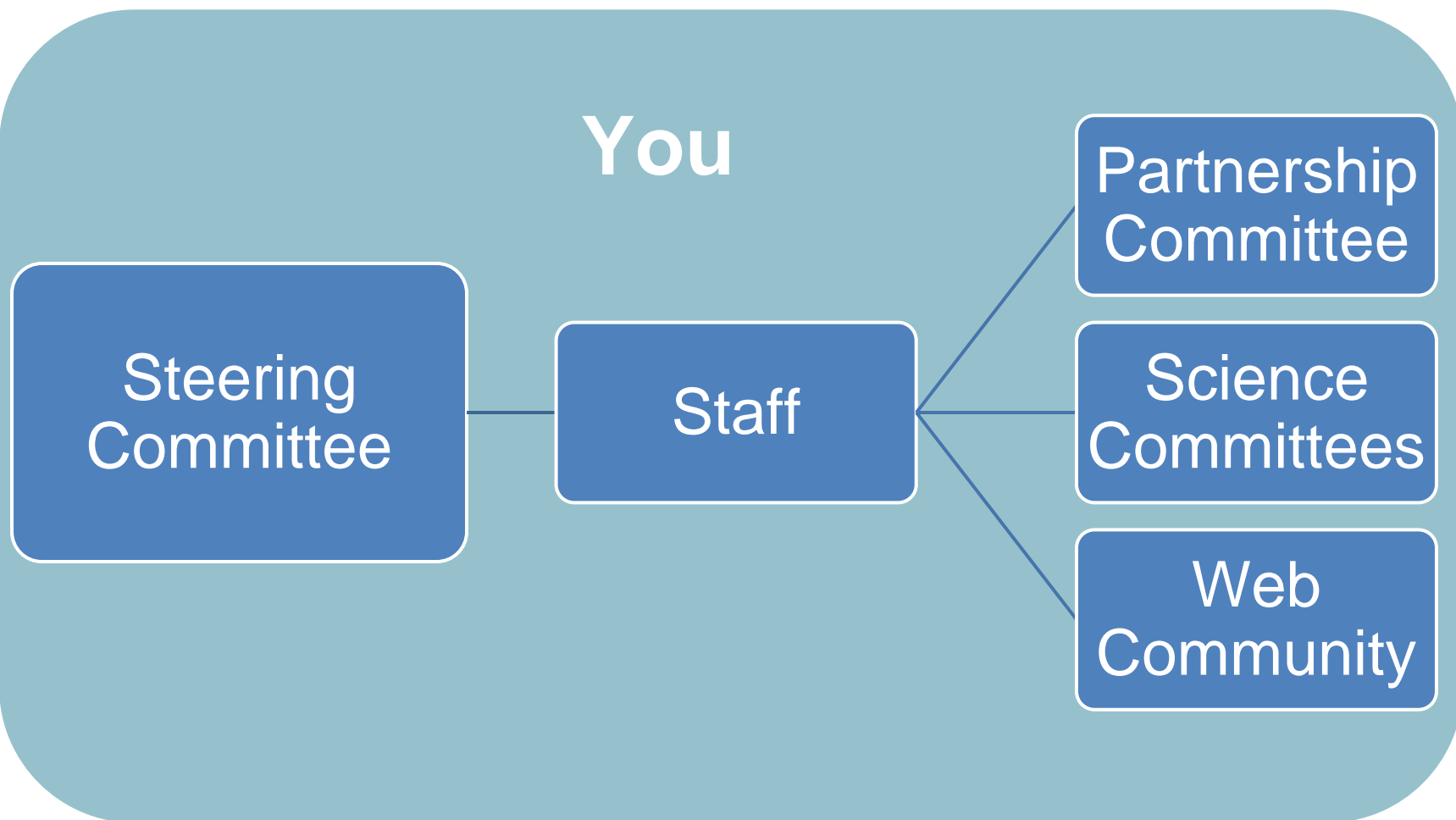
Steering  
Committee

Staff

Partnership  
Committee

Science  
Committees

Web  
Community



# Steering Committee



# A diversity of investors

- 6 staff positions funded by 4 agencies



- offices provided by NC Wildlife Resources Commission



- an active web community of more than 650 members from over 70 different organizations



# How to get involved in your cooperative

- Join the SALCC web community
- Communicate with a Steering Committee rep
- Participate in web forums
- Participate on committees
- Call a staff member or liaison

[www.southatlanticlcc.org](http://www.southatlanticlcc.org)



# Conservation Blueprint

Progress and development



So what's different from past efforts?



## So what's different from past efforts?

- Planning for the cooperative not any one organization



## So what's different from past efforts?

- Planning for the cooperative not any one organization
- This is an adaptation strategy (incorporating climate change, urban growth, and other future changes)



## So what's different from past efforts?

- Planning for the cooperative not any one organization
- This is an adaptation strategy (incorporating climate change, urban growth, and other future changes)
- **Bigger scope and scale**



## Steps in the Blueprint

- **Indicators and targets** (shared metrics of success)
- **State of the South Atlantic** (past, present, and future condition of indicators)
- **Conservation Blueprint** (spatially-explicit map of how we're going to keep indicators "in the green")

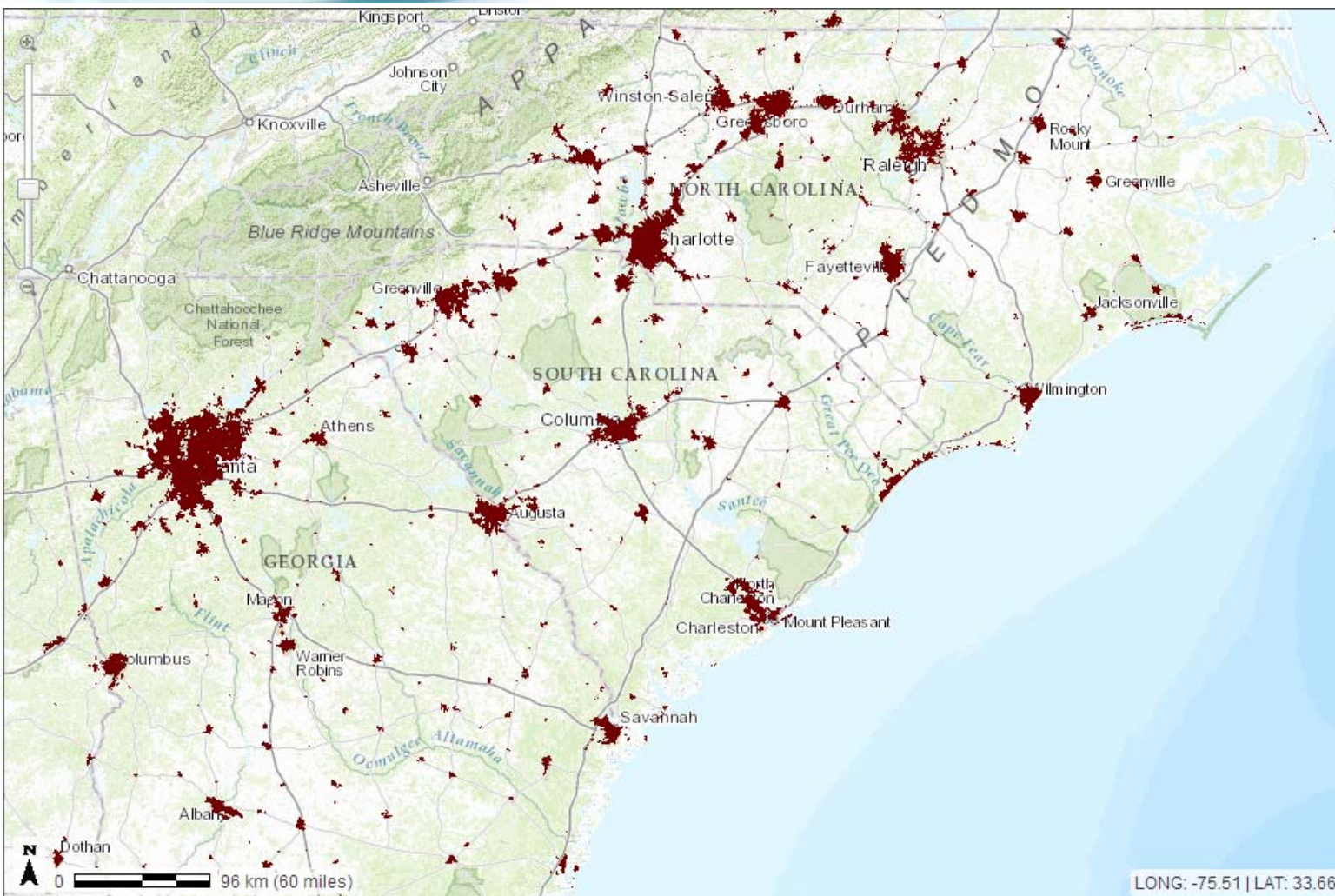
# Conservation Blueprint: Where we are

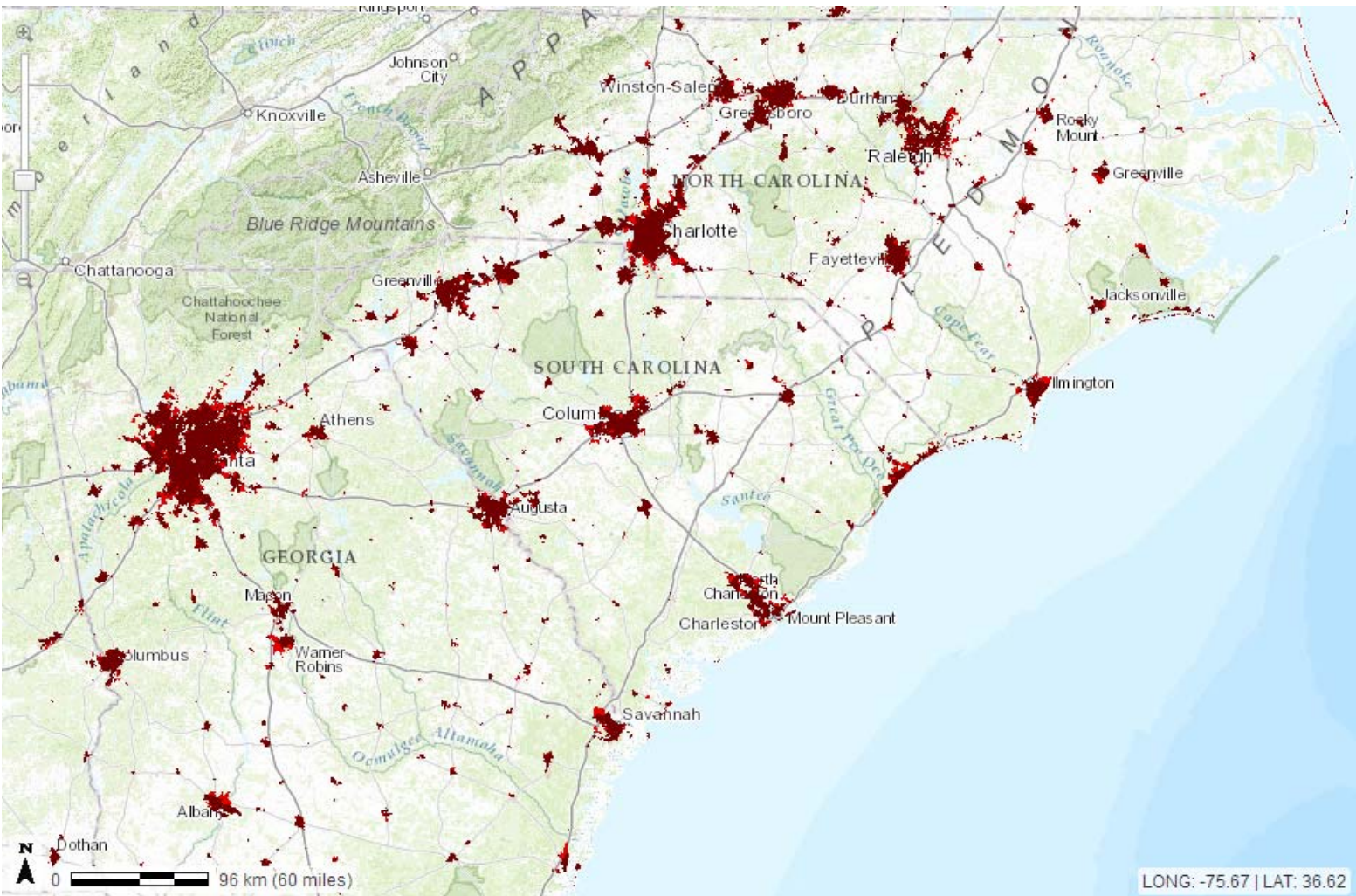
State of the South Atlantic

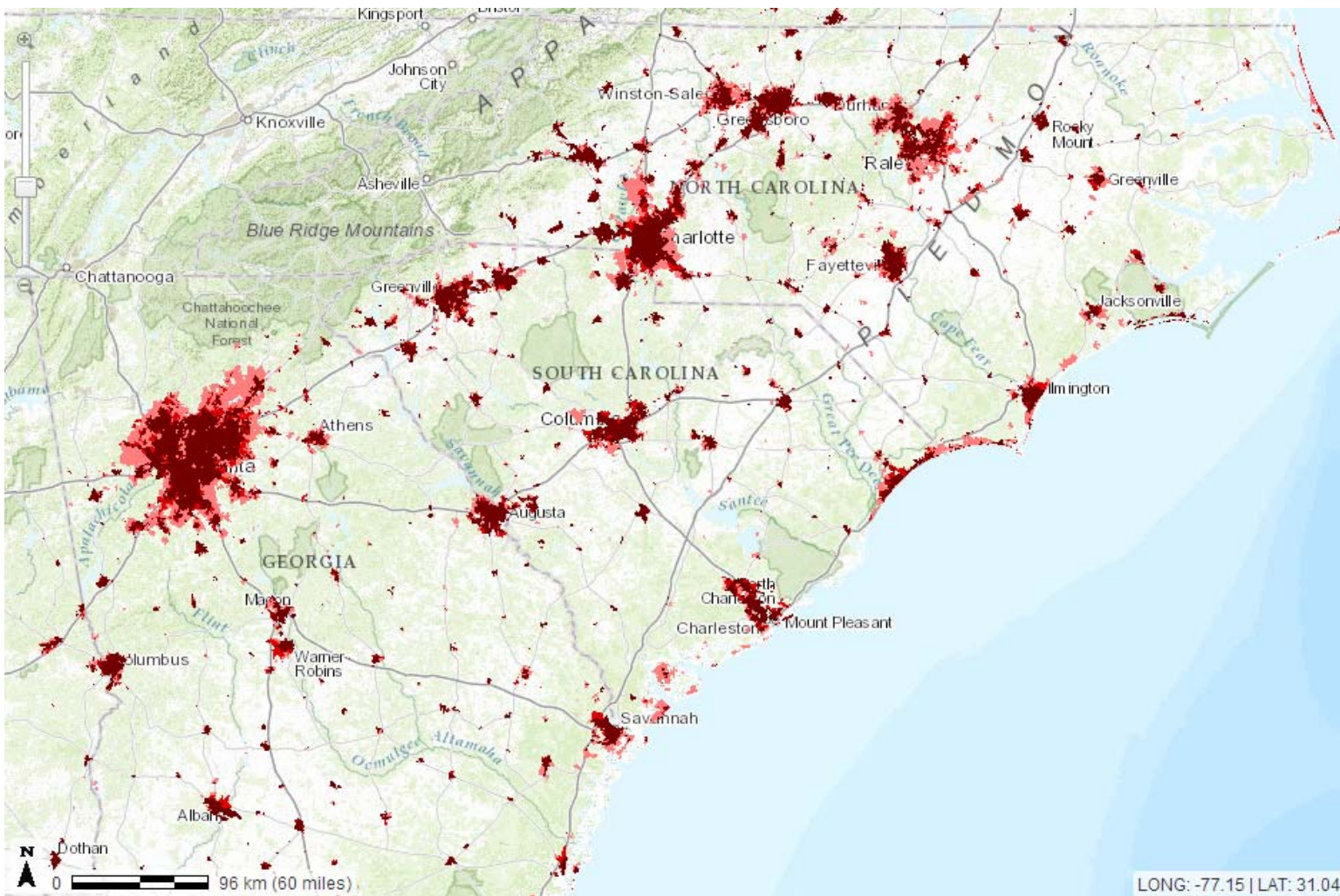


Blueprint 1.0

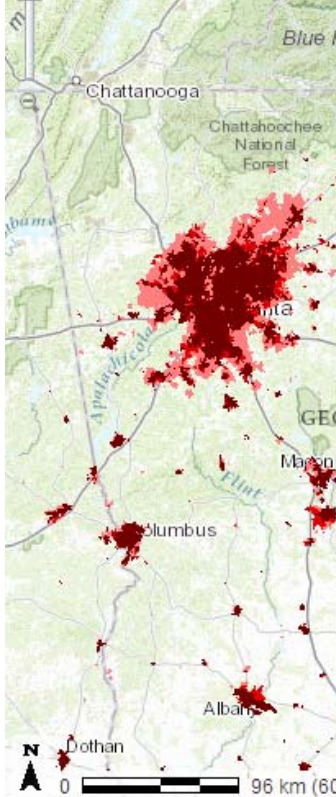
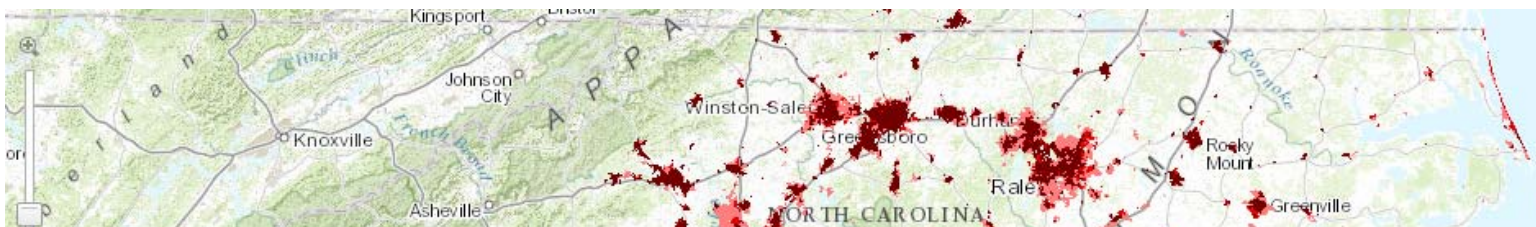
- Draft State of the South Atlantic
- Blueprint workshops



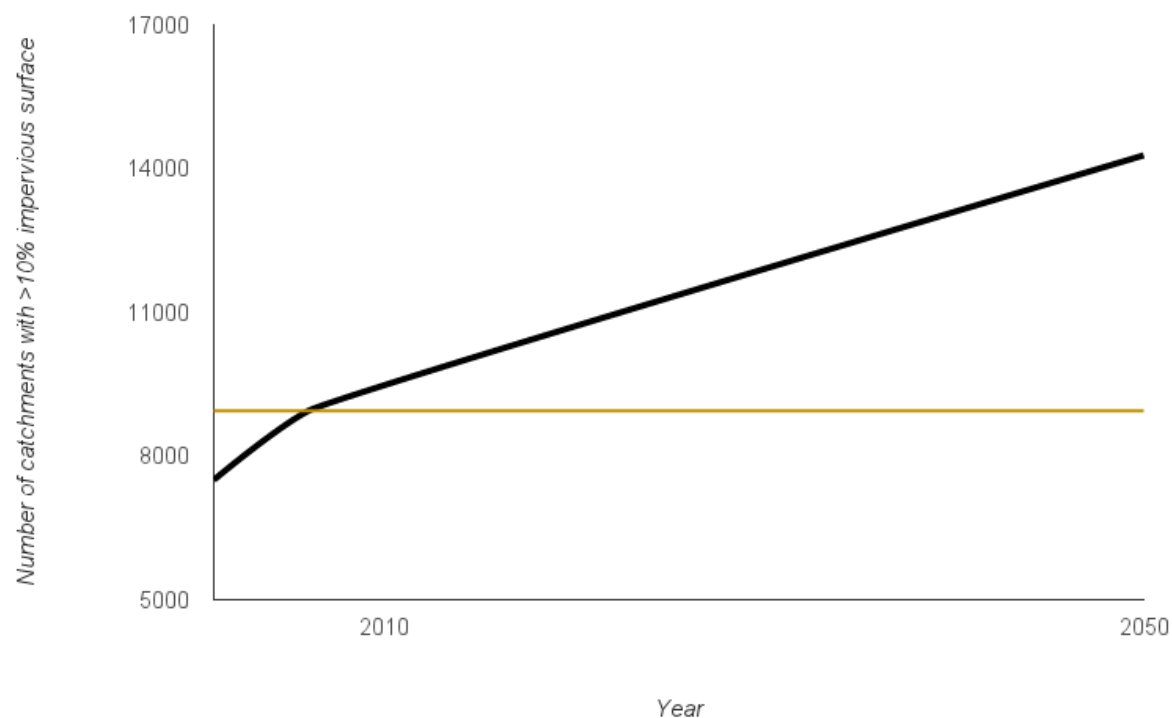




2001      2006      **2050**



**Impervious surface compared to SALCC target**



2001

2000

2050

## Conservation Blueprint: Where we're going

State of the South Atlantic



Blueprint 1.0

- Regional workshops (Oct/Nov)
- Draft Blueprint 1.0 (Jan)
- State of the South Atlantic (Jan)
- Blueprint 1.0 (Mar)



## Blueprint workshop dates

### Hilton Garden Inn, Raleigh, NC

Workshop #1: Oct 22 (10am - 3pm)

Workshop #2: Oct 23 (10am - 3pm)

### Coastal Georgia Center, Savannah, GA

Workshop #3: Nov 19 (10am - 3pm)

Workshop #4: Nov 20 (10am - 3pm)