



South Atlantic Alliance Compatible Resource Use Footprint



Paul Friday
Deputy Assistant Chief of Staff G7
Marine Corps Installations East
4-5 September 2013

NORTH CAROLINA EXAMPLE

- ▶ Create a “good map” for mutual/multiple benefits
 - Requirement (2 maps with multiple layers)
 - Compatible Resource Footprint (Ground)
 - Included all North Carolina installations, US Navy and North Carolina National Guard
 - Covered air, land and sea
 - Identified critical areas for compatible land use
 - Compatible Resource Footprint (Height)
 - Included all North Carolina installations, US Navy and North Carolina National Guard
 - Covered air, land and sea
 - Identified critical areas for tall structures
 - Identified extent of training

DATA REQUIREMENTS GROUND

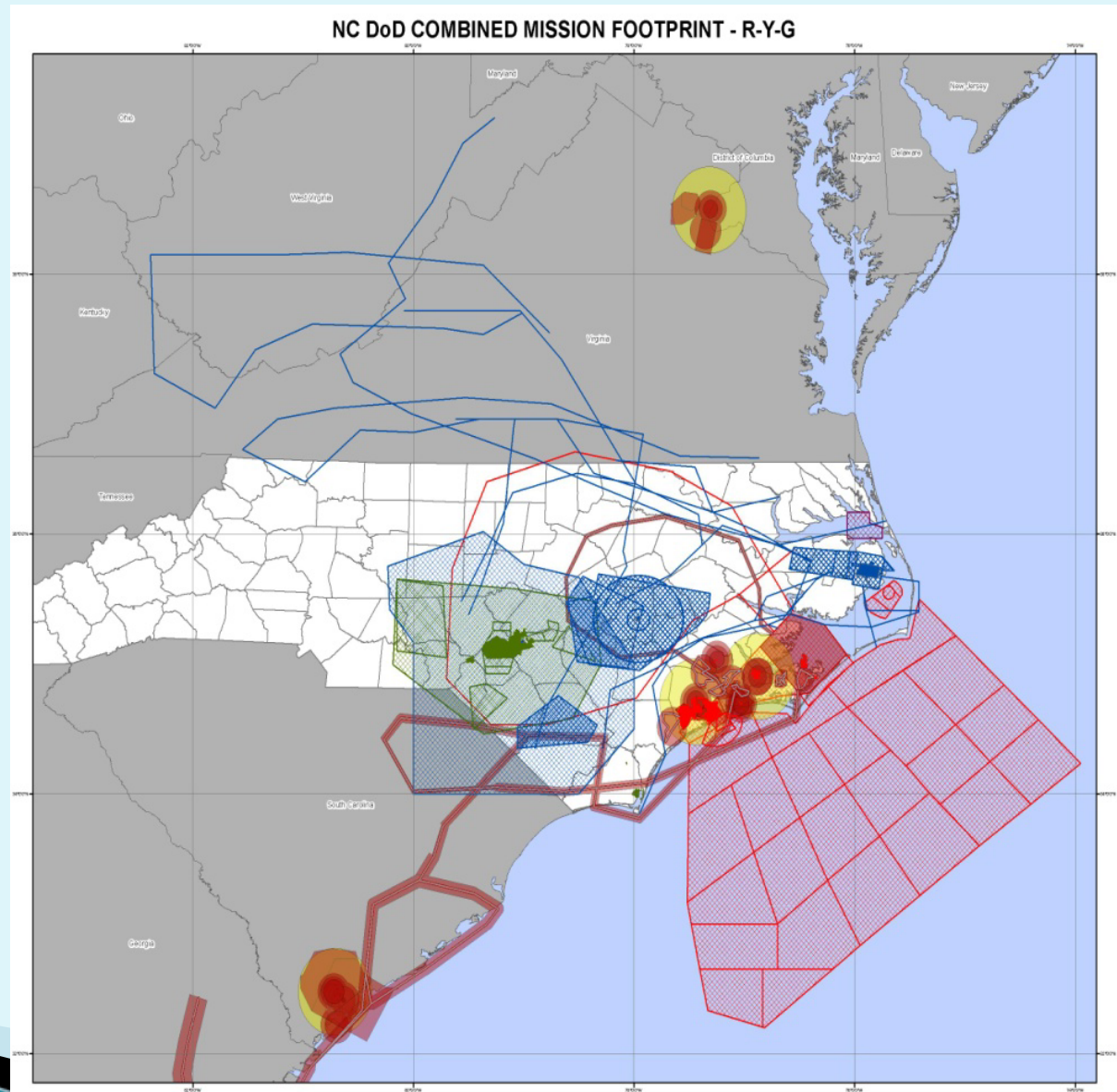
USMC Compatible Resource Footprint-Ground	
Data Layers	Color Designation
Restricted Areas	Yellow
MTR Areas (MTR Buffer)	Yellow
TERF Boundaries (1NM)	Yellow
Flight Path Overlay District	Yellow
Unprotected Airfield	Yellow
Air Noise Zone Areas (Off Base)	Yellow
Range Noise Zone Areas (Off Base)	Yellow
Air Accident Potential Zones (APZ) (Off Base)	Yellow
Joint Land Use Study Buffer	Yellow
Ranges (Off Base)	Red
Military Training Areas (Off Base)	Red
Impact Areas (Off Base)	Red
Installation Boundaries	N/A
State and County Boundaries	N/A

DATA REQUIREMENTS AIR

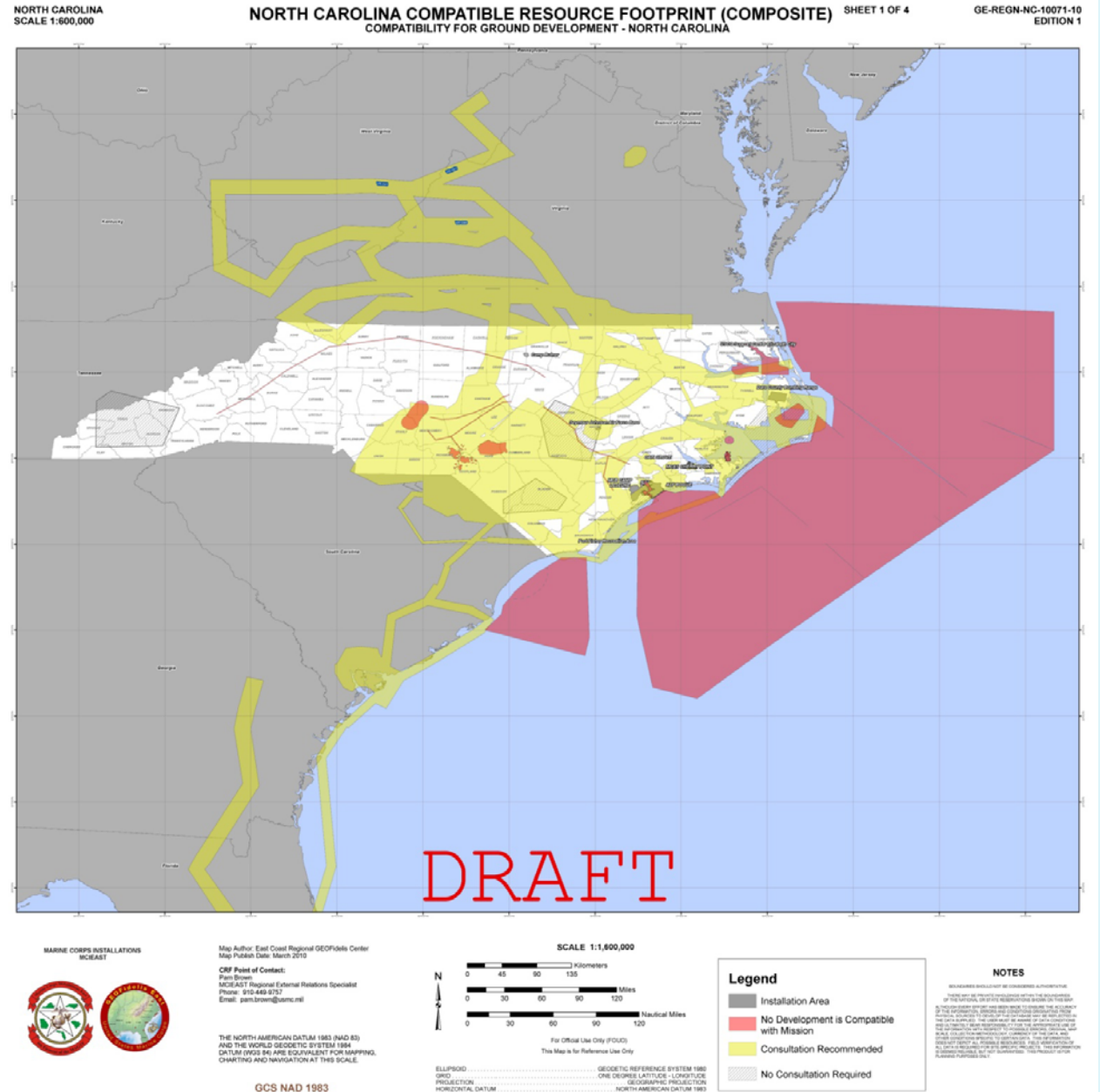
USMC Compatible Resource Footprint-Air	
Data Layers	Color Designation
Radar Vector Area	Yellow
MTR Areas (MTR Buffer)	Red/Yellow (Varies Per Segment)
Ranges	Red
Restricted Areas	Red
Class D Airspace	Red
Class E Airspace	Red
TERF Boundaries (1NM)	Red
Military Training Areas	Red
Impact Areas	Red
Flight Path Overlay District	Red
Unprotected Airfield	Red
Installation Boundaries	N/A
State and County Boundaries	N/A

COMBINED MISSION FOOTPRINT

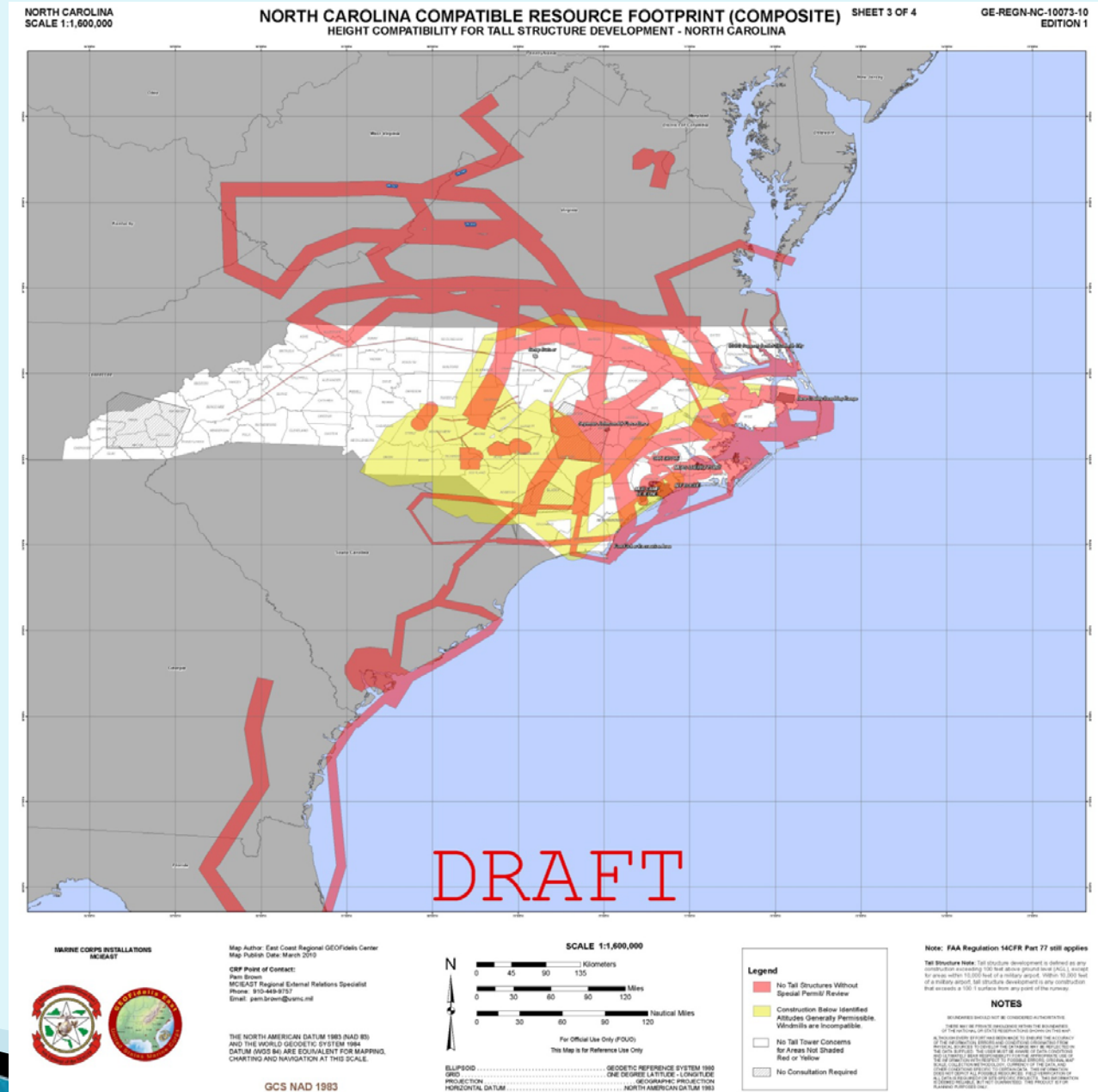
D
R
A
F
T



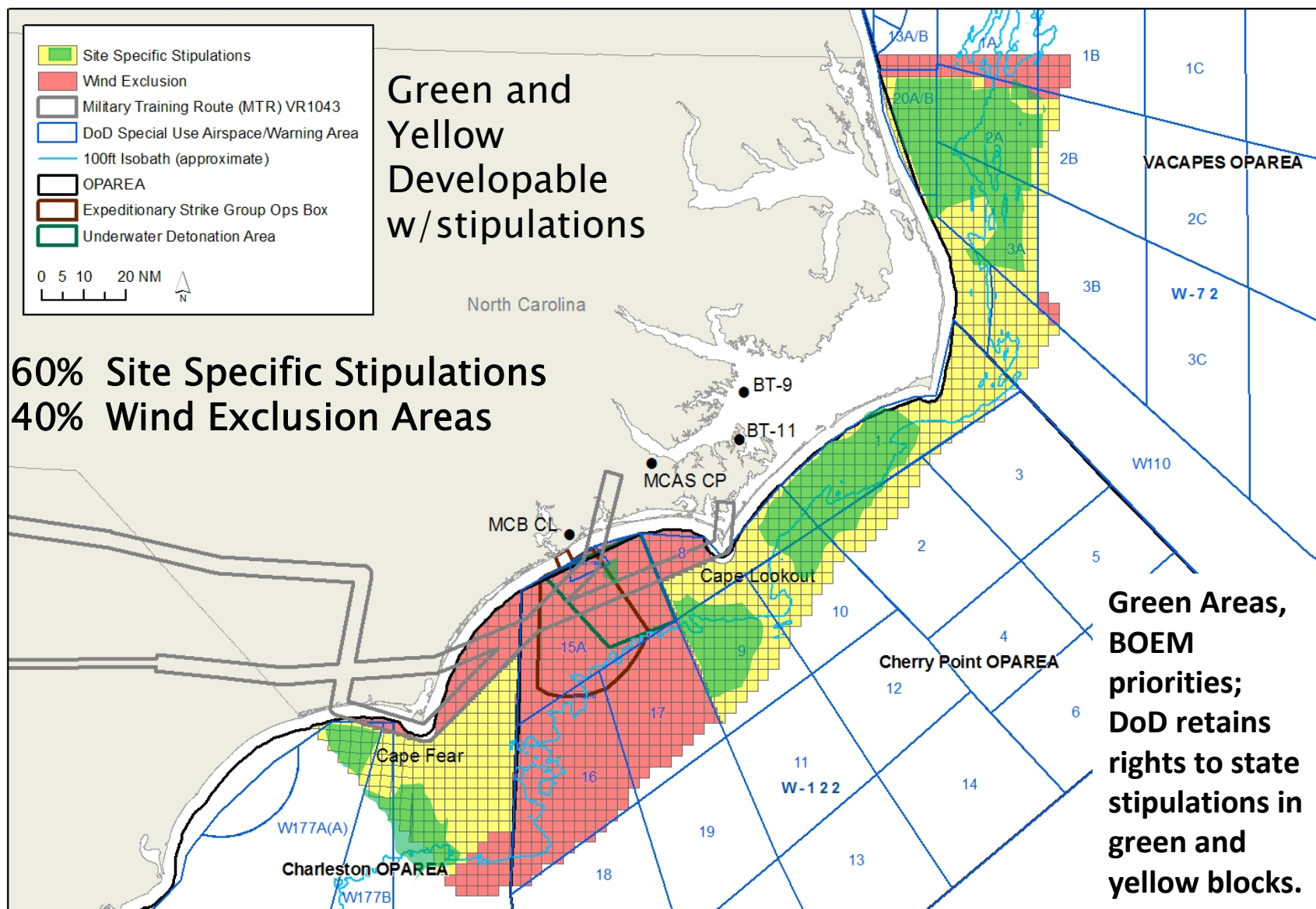
NC Coastal Focus Area Ground

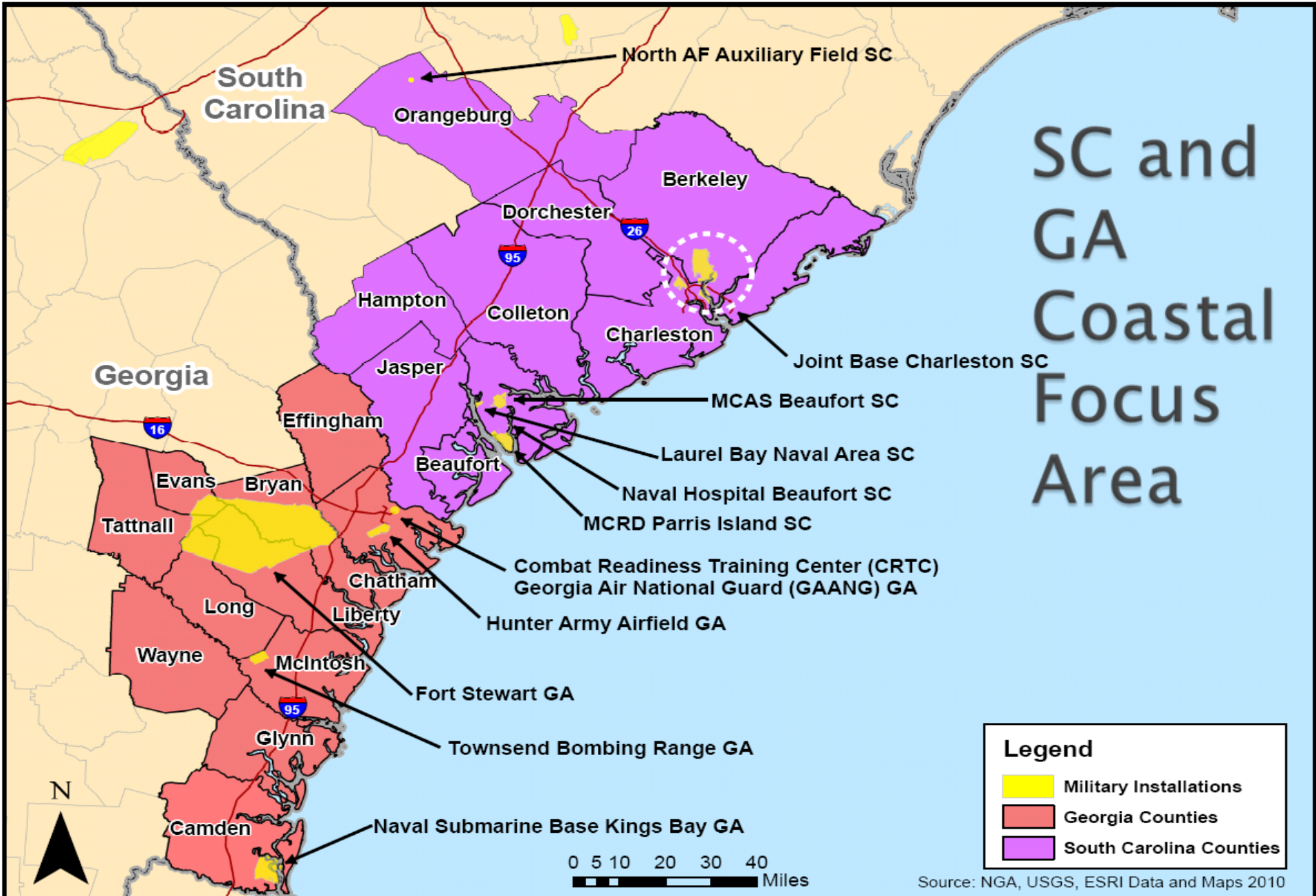


Air

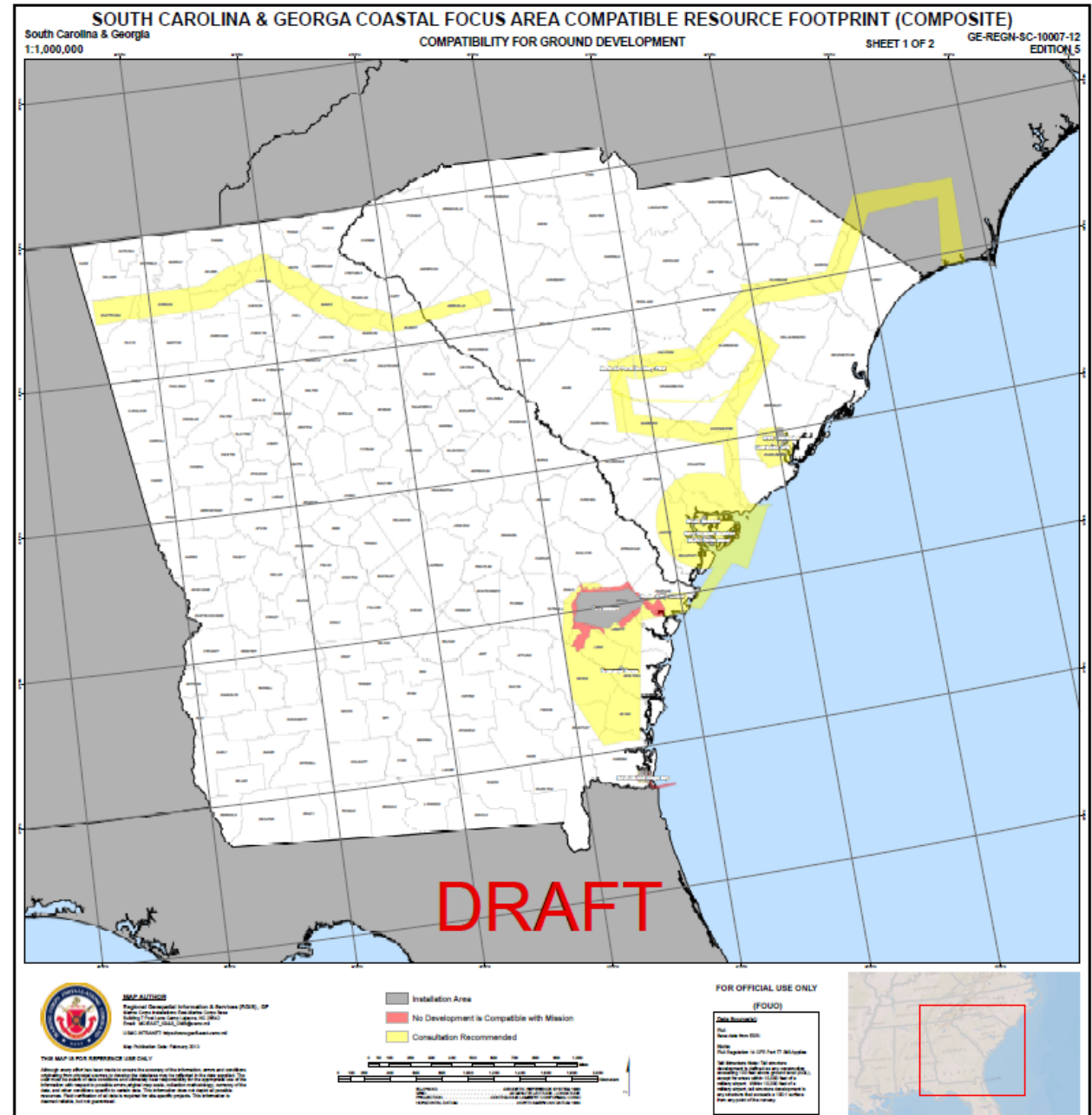


NC Off-shore Assessment



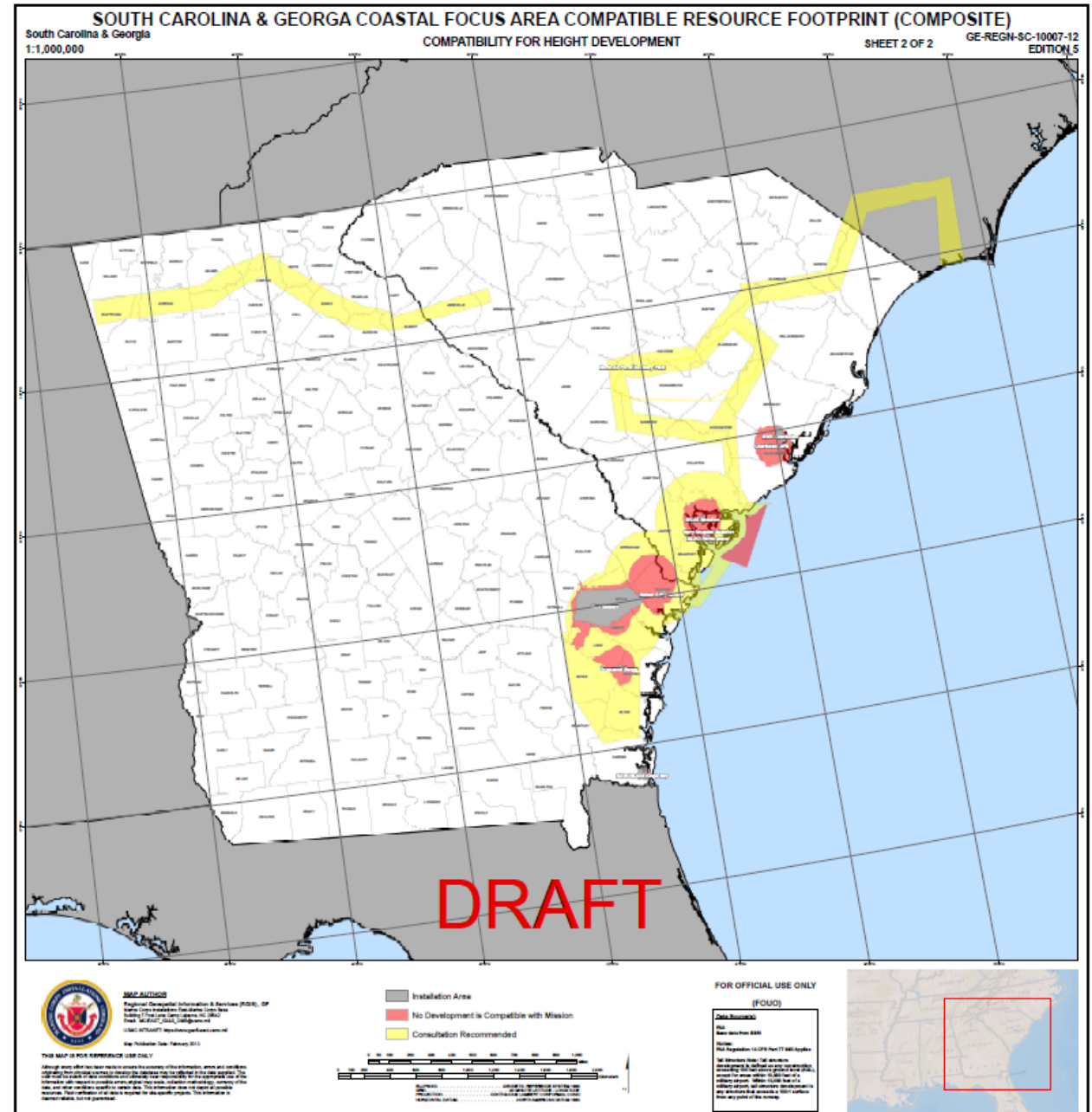


SC and GA Coastal Focus Area Ground

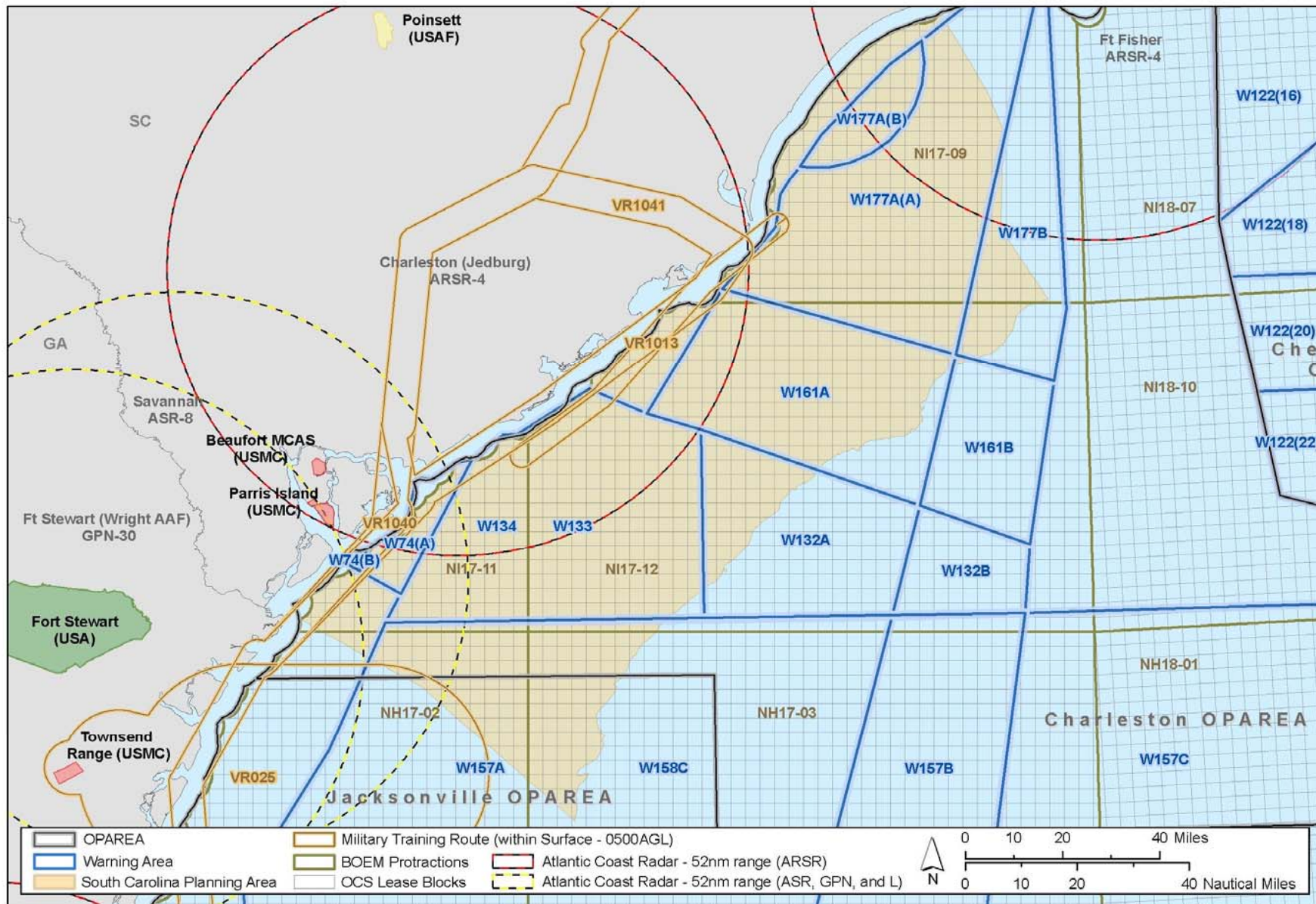


SC and GA Coastal Focus Area

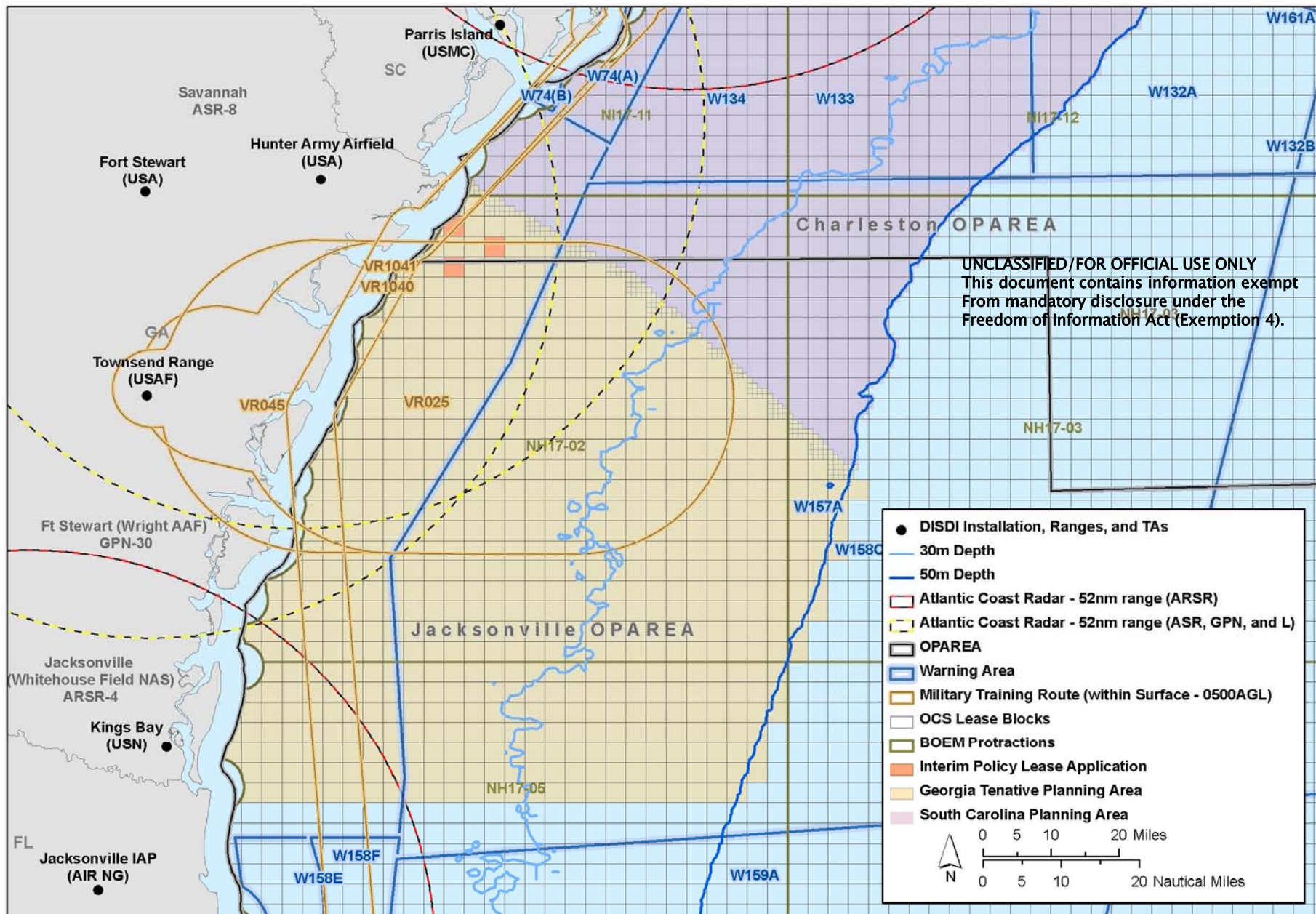
Air



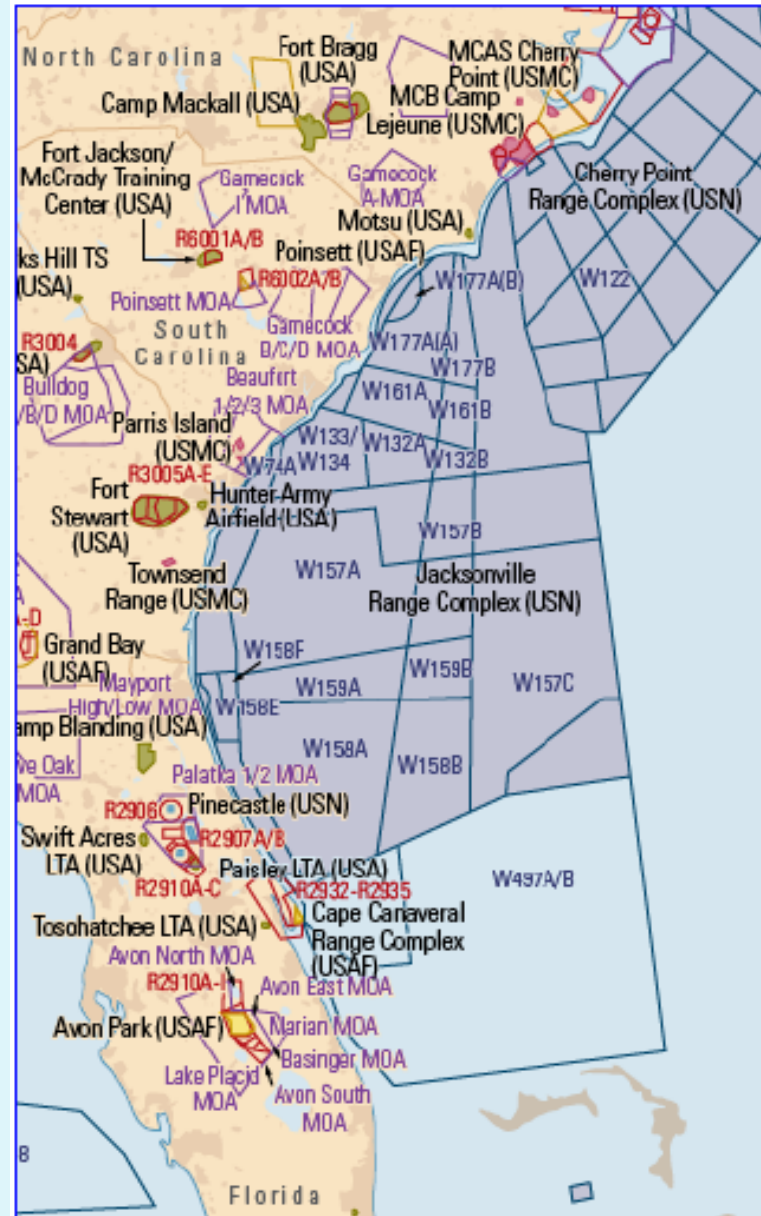
SC Offshore Assessment Area



GA Offshore Assessment Area



DoD Ranges and Special Use Airspace, Southeast



Testing and Training Ranges Southeast

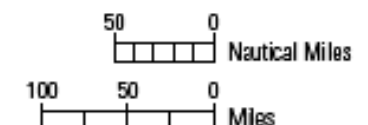
DoD Ranges

	U.S. Marine Corps
	U.S. Navy
	U.S. Air Force
	U.S. Army
	Surface/Subsurface Operating Areas

Special Use Airspace

	Alert Area
	Military Operating Area (MOA)
	Restricted Area
	Warning Area
	Danger and Prohibited Area

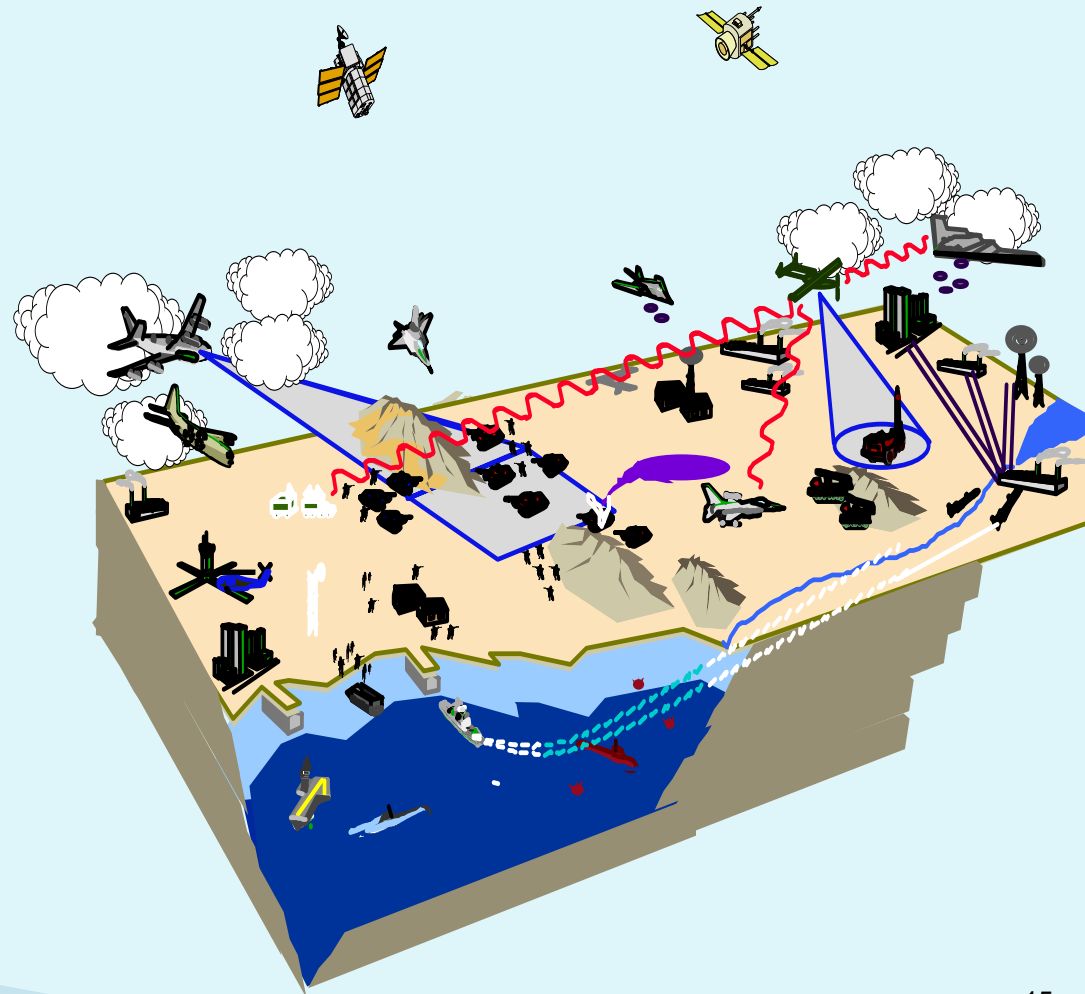
U.S. Census Populated Places



Sources: MT, DISDI, 2014; OFIS, USAEC, 2007; NGA DARE, 2008; Atlantic Fleet Inst 3120.26E, 1993

Mission Footprint Competing Interests!

- ▶ The mission footprint is driven by:
 - Need for larger Operational Training Areas (per the Training Ranges Required Capabilities Document)
 - Need to satisfy joint requirements
 - Need to train in and over local and regional community space;
- ▶ Constrained by existing real property
 - Internal Encroachment
 - Environmental Constraints
- ▶ External views significantly impact our ability to perform mission



COMPATIBLE RESOURCE USE FOOTPRINT

► Way Ahead

- MCIEAST staff is in contact with SME's of all Installations to verify data for Combined Mission Footprint maps
- Will request authorization to release data from each Installation Commander
- GEOFIDELIS will establish DoD website for distribution of data to .mil CAC enabled users
- Develop plan to distribute data to state/local governments
- Determine additional mapping requirements

COMPATIBLE RESOURCE USE FOOTPRINT

- ▶ We're here to help
- ▶ This is your product
- ▶ QUESTIONS?????