



# GSAA Information Management System

Debra Hernandez  
Executive Director

Southeast Coastal Ocean Observing Regional Association

Funded by the GSAA through SCSGC from NOAA Award NA12NOS4730007

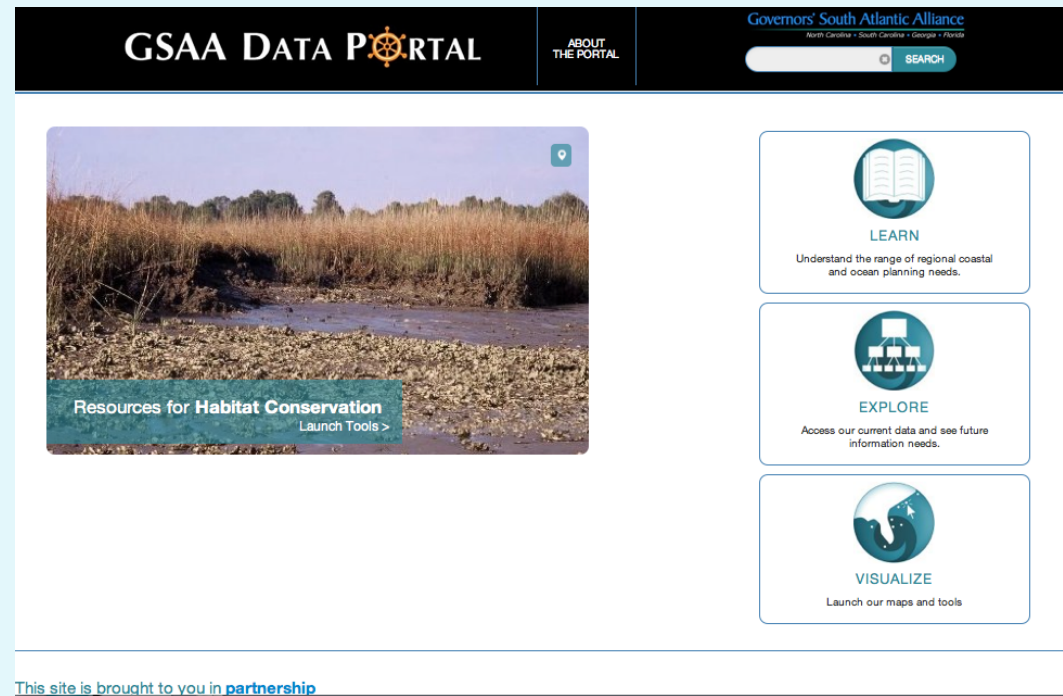
## GSAA RIMS Project

### ► Purpose:

- Enable Issue Team collaboration
- Initial themes:
  - Sediment management/Ports
  - Habitat conservation
  - What else?

### ► Design prototype RIMS:

- Framework to access data and information
- What data?
- What analysis & visualization?
- What DSTs?



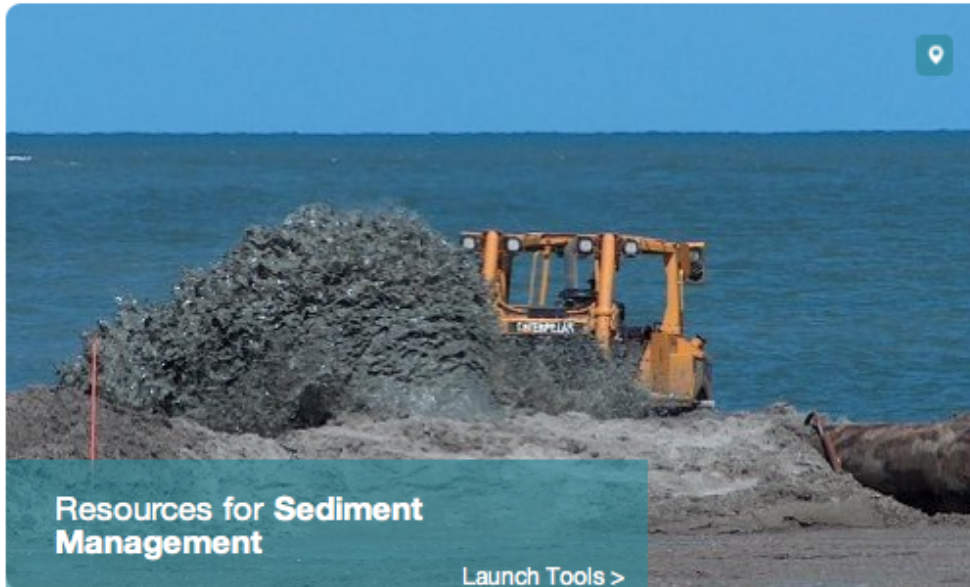
## GSAA DATA PORTAL

ABOUT  
THE PORTAL

Governors' South Atlantic Alliance

North Carolina • South Carolina • Georgia • Florida

SEARCH



Resources for **Sediment  
Management**

Launch Tools >



### LEARN

Understand the range of regional coastal and ocean planning needs.



### EXPLORE

Access our current data and see future information needs.



### VISUALIZE

Launch our maps and tools

## GSAA DATA PORTAL

ABOUT  
THE PORTAL

Governors' South Atlantic Alliance

North Carolina • South Carolina • Georgia • Florida

SEARCH

**LEARN** more about some of the critical coastal and ocean activities along the South Atlantic Coast.



Sediment Management



Habitat Conservation

FUTURE PRIORITY AREA  
(based on feedback from  
Technical Teams)

FUTURE PRIORITY AREA  
(based on feedback from  
Technical Teams)

### Learn

Sediment Management  
Habitat Conservation

### Explore

Data Catalog

### Visualize

Maps and Tools



## GSAA DATA PORTAL

ABOUT  
THE PORTAL

Governors' South Atlantic Alliance

North Carolina • South Carolina • Georgia • Florida

SEARCH

### EXPLORE - Access current data and see future data needs.

A catalog has been created to provide access to data on coastal and ocean resources and uses. These data come from a variety of sources. Data are viewable under priority management themes identified through the Governor's South Atlantic Alliance or through a search mechanism.

| Data Layer   | Sediment Management | Habitat Conservation |
|--|---------------------|----------------------|
| Habitat- includes physical and geologic characteristics        |                     |                      |
| Bathymetry   | X                   |                      |
| Bottom sediment type   | X                   |                      |
| Hard bottom  | X                   | X                    |
| Wind speed   |                     |                      |
| Tidal current  |                     |                      |
| Submerged aquatic vegetation                                   |                     | X                    |
| Biological - includes species data (fish, birds, turtles, etc) |                     |                      |
| Fish   |                     | X                    |
| Sea turtle (nesting and in water)                              | X                   | X                    |
| Bird nesting and overwintering                                 | X                   | X                    |
| Marine mammals   |                     | X                    |
| Benthic communities  |                     |                      |
| Plankton   |                     |                      |
| Uses - includes closures, activity areas, etc                  |                     |                      |
| Artificial reefs   |                     |                      |
| Recreational boating (e.g. ramps)                              |                     |                      |
| Commercial fishing   |                     |                      |

#### Learn

Sediment Management  
Habitat Conservation

#### Explore

Data Catalog

#### Visualize

Maps and Tools

## GSAA DATA PORTAL

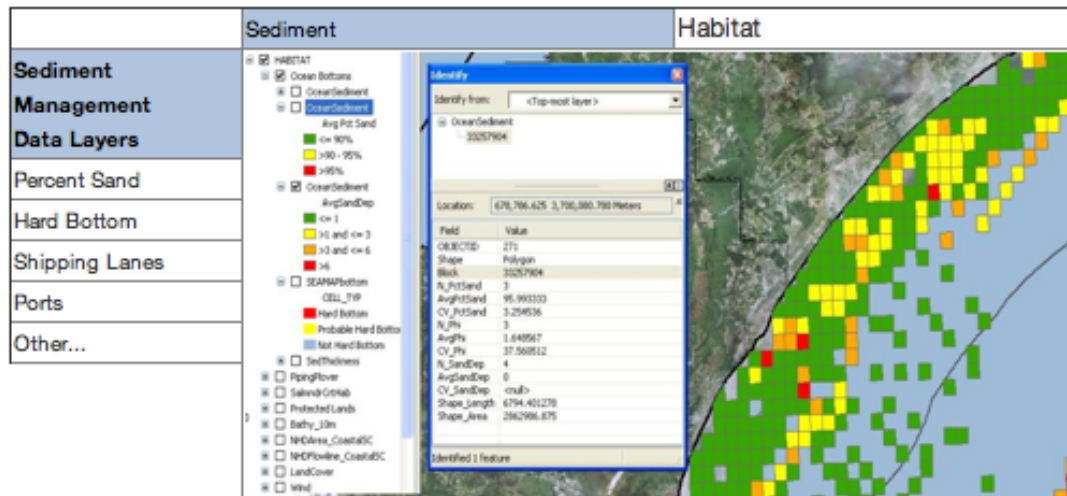
ABOUT  
THE PORTAL

Governors' South Atlantic Alliance

North Carolina • South Carolina • Georgia • Florida

SEARCH

**VISUALIZE** - Launch the coastal and ocean maps and tools.



[Learn](#)

Sediment Management  
Habitat Conservation

[Explore](#)

Data Catalog

[Visualize](#)

Maps and Tools

This site is brought to you in **partnership**



# Governors' South Atlantic Alliance

*North Carolina • South Carolina • Georgia • Florida*

## Questions?

## Issue Technical Team Input

- ▶ How do we link with your Technical Team?
- ▶ What are your spatial data needs?
- ▶ How we can communicate better?

| Data Layers *   | GSAA/SECOORA Project Issue Areas** |                      | GSAA Issue Area Technical Teams |                                |                                |                     |
|---|------------------------------------|----------------------|---------------------------------|--------------------------------|--------------------------------|---------------------|
|   | Sediment Management                | Habitat Conservation | Healthy Ecosystems              | Disaster Resilient Communities | Clean Coastal and Ocean Waters | Working Waterfronts |
| <i>Habitat- includes physical and geologic characteristics</i>        |                                    |                      |                                 |                                |                                |                     |
| Bathymetry  | X                                  |                      |                                 |                                |                                |                     |
| Bottom Sediment Type  | X                                  | O                    |                                 |                                |                                |                     |
| Hard bottom   | X                                  | X                    |                                 |                                |                                |                     |
| Wind speed  |                                    |                      |                                 |                                |                                |                     |
| Tidal current   | O                                  |                      |                                 |                                |                                |                     |
| Submerged Aquatic Vegetation  | O                                  | X                    |                                 |                                |                                |                     |
| <i>Biological – includes species data (fish, birds, turtles, etc)</i> |                                    |                      |                                 |                                |                                |                     |
| Fish  |                                    | X                    |                                 |                                |                                |                     |
| Sea Turtle (nesting and in water)                                     | X                                  | X                    |                                 |                                |                                |                     |
| Bird Nesting and Overwintering  | X                                  | X                    |                                 |                                |                                |                     |
| Marine Mammals  | O                                  | X                    |                                 |                                |                                |                     |
| Benthic Communities   | O                                  |                      |                                 |                                |                                |                     |
| Plankton  |                                    |                      |                                 |                                |                                |                     |
| <i>Uses - includes closures, activity areas, etc</i>                  |                                    |                      |                                 |                                |                                |                     |
| Artificial Reefs  | O                                  | O                    |                                 |                                |                                |                     |
| Recreational boating (e.g. ramps)                                     |                                    | O                    |                                 |                                |                                |                     |
| Commercial Fishing  | O                                  | O                    |                                 |                                |                                |                     |
| Hardened shorelines   |                                    |                      |                                 |                                |                                |                     |
| Beach renourishment (e.g. borrow and fill sites)                      | -X-                                |                      |                                 |                                |                                |                     |
| Dredging (e.g. disposal areas, maintained channels)                   | -X-                                |                      |                                 |                                |                                |                     |
| Cables  | O                                  |                      |                                 |                                |                                |                     |
| Military activity   | O                                  | O                    |                                 |                                |                                |                     |
| Protected areas   | O                                  | X                    |                                 |                                |                                |                     |
| Shipping (e.g. lanes, activities)                                     | X                                  | O                    |                                 |                                |                                |                     |
| Regulatory Boundaries   | O                                  | O                    |                                 |                                |                                |                     |
| Navigational charts   |                                    |                      |                                 |                                |                                |                     |
| Others???   |                                    |                      |                                 |                                |                                |                     |